

TOUR DE SUISSE

# TECHNICAL GUIDE

12 - 21 June 2022 • [www.tds.ch](http://www.tds.ch)

WOMEN



TOUR DE SUISSE

MAIN PARTNER

primeo energie

Main Partner: primeo energie

Premium Partner: search.ch

Data-Partner: LEAD

Host Broadcaster: #SWISSCYCLING family ACTYVO.

Mediapartner: SRG SSR

Rights Owner: Blick

Proud Member of: SWISS CYCLING

Event Organizer: UCI CYCLING UNLIMITED



Pfyn  
stanz  
km

5 km

50



# CONTENTS

Sponsors .....	6
Contact Details .....	8
Team-Hotels .....	9
ANDY SCHLECK -CP NVST - IMMO LOSCH .....	9
BECYCLING-REGIONALTEAM.....	9
CANYON/SRAM RACING .....	9
CERATIZIT - WNT PRO CYCLING TEAM .....	9
COFIDIS WOMEN'S TEAM .....	9
FDJ NOUVELLEAQUITAINE FUTUROSCOPE .....	9
JUMBO-VISMA WOMEN TEAM .....	9
LIV RACING XSTRA .....	9
LOTTO SOUDAL LADIES .....	9
MOVISTAR TEAM WOMEN .....	9
ROLAND COGEAS EDELWEISS SQUAD.....	9
STADE ROCHELAIS CHARENTEMARITIME WOMEN CYCLING .....	9
SWISS CYCLING NATIONALTEAM.....	10
TEAM BIKEEXCHANGE - JAYCO .....	10
TEAM COOP - HITEC PRODUCTS .....	10
TEAM DSM .....	10
TREK - SEGAFREDO .....	10
UAE TEAM ADQ.....	10
VALCAR - TRAVEL & SERVICE .....	10
Hotels Doctors / Directorate / UCI Commissionaires .....	10 - 11
Hospital list .....	11
Signage .....	12
Convoy structure .....	14
Rules of the race .....	15
Media information .....	20
TV broadcasting .....	20
Route .....	21
Meeting plan .....	22
Important information .....	23
1 <sup>st</sup> stage .....	25
2 <sup>nd</sup> stage .....	31
3 <sup>rd</sup> stage .....	35
4 <sup>th</sup> stage .....	42

## MAIN PARTNER



General classification

## PREMIUM PARTNER



GPM classification



Points classification



Best young rider



Stage winner

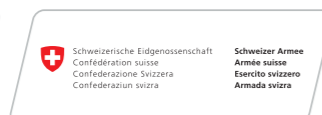
## DATA-PARTNER



## HOST BROADCASTER



## PRIME PARTNER



## SUPPLIER



## RIGHTS OWNER



## MEDIAPARTNER



## TALENT SUPPORTER



## EDUCATION PARTNER



## ROAD SAFETY PARTNER



## PROUD MEMBER OF



## HOST



## CONTACT DETAILS ORGANISATION

<b>Race director</b> Olivier Senn +41 79 528 41 60	<b>Course advertising</b> Moritz Sauer +41 79 254 14 67	<b>Neutral race service</b> Martin Obrist +41 79 334 03 51	<b>Course Safety</b> Beat Wettstein +41 79 255 43 00
<b>Technical director</b> Jonas Leib +41 78 711 29 18	<b>Advertising column</b> Silvan Erdin +41 79 450 55 36	<b>Race</b> Josef Wehrli +41 79 572 23 42	<b>Start zone</b> Stephan Bühler +41 79 709 08 48
<b>Sports director</b> David Loosli +41 79 285 52 13	<b>Entertainment</b> Urban Kaiser +41 79 795 80 57	<b>Race information</b> Georges Lüchinger +41 78 647 04 40	<b>TdS Challenge</b> Patrick Huber +41 79 883 47 71
<b>Project Manager</b> Caroline Jost +41 79 790 85 97	<b>Hospitality</b> Christoph Jost +41 79 427 47 90	<b>Race office</b> Stephan Wüthrich +41 78 830 84 19	<b>Tour Police</b> Fabio Zahner +41 79 866 56 96
<b>Assistant</b> Laurine Kirchgessener +41 79 287 48 70	<b>Doctors / paramedic</b> Dr. Roland Kretsch +41 79 808 82 30	<b>Race signage</b> Pascal Bachmann +41 79 650 84 88	
<b>Media department</b> Ueli Anken +41 79 638 18 18	Dr. Andreas Koch +41 79 808 82 40	<b>Radio-Tour</b> Steve Bovay +41 79 270 73 77	
<b>Social Media</b> Jan Mühlethaler +41 78 911 29 82	<b>Safety manager / COVID 19 Responsible</b> Lars Bertrams +41 79 711 13 54	<b>Safety Escort</b> Guido Sereinig +41 79 955 47 72	
<b>Accommodation</b> Karin Breitenstein +41 79 791 01 24	<b>Finish zone</b> Dave Perlini +41 79 285 27 50	<b>Race safety</b> Arnold Henseler +41 79 736 13 12	

## CONTACT DETAILS COMMISSIONAIRES

<b>UCI, Commissionaire president</b> Max Michaud +33 6 06 83 85 89	<b>Swiss Cycling, Commissionaire</b> Carolin Döring +44 76 346 12 57	<b>Swiss Cycling, Commissionaire</b> Markus Merkl +44 76 824 37 97
<b>ITA Doping Control Officer</b> Marlen Polymeropoulou +33 6 94 53 36162	<b>Swiss Cycling, Commissionaire</b> Matthias Hahn +44 76 856 64 12	<b>Swiss Cycling, Commissionaire</b> Celine Rutler +33 6 26 96 12 66
<b>ITA Doping Control Officer</b> Lorenzo Senesi +39 3332077500	<b>Swiss Cycling, Commissionaire</b> Johannes Klaiher +44 79487 55 75	<b>Swiss Cycling, Commissionaire</b> Stefano Sabbadini +39 3283756303
<b>Swiss Cycling, Commissionaire</b> Dario Bassi +44 78 935 37 63	<b>Swiss Cycling, Commissionaire</b> Frédéric Luy +44 79 773 33 66	



## TEAM-HOTELS

<b>ANDY SCHLECK - CP NVST - IMMO LOSCH</b> 18.-20.06.2022 Radisson Blu Hotel St. Jakobstr. 55 9000 St.Gallen nicole.weber@radissonblu.com +41 71 242 12 12	<b>COFIDIS WOMEN'S TEAM</b> 18.-21.06.2022 Jufa Hotel Malbun Malbunstrasse 60 9497 Malbun malbun@jufahotels.com +423 399 20 00	<b>LOTTO SOUDAL LADIES</b> 18.-21.06.2022 Rocksresort Via Murschetg 15 7032 Laax cristina.fuchs@laax.com +41 81 927 71 66
20.-21.06.2022 Buchserhof Grünaustrasse 2 9470 Buchs info@buchserhof.ch +41 81 755 70 70	<b>FDJ NOUVELLE-AQUITAINE FUTUROSCOPE</b> 18.-20.06.2022 Hotel one66 Alte Bildstrasse 6 9015 St.Gallen roomsdivision@one66.ch +41 71 314 71 71	<b>MOVISTAR TEAM WOMEN</b> 18.-20.06.2022 Hotel one66 Alte Bildstrasse 6 9015 St.Gallen roomsdivision@one66.ch +41 71 314 71 71
<b>BECYCLING - REGIONALTEAM</b> 18.-21.06.2022 Hotel Sportcenter 5 Dörfer Oberauweg 186D 7205 Zizers hotel@5doerfer.ch +41 81 307 19 90	20.-21.06.2022 Marina Walensee Hotel Gostenstrasse 20 8882 Unterterzen reservation@marina-walensee.ch +41 81 720 31 00	20.-21.06.2022 Marina Walensee Hotel Gostenstrasse 20 8882 Unterterzen reservation@marina-walensee.ch +41 81 720 31 00
<b>CANYON/SRAM RACING</b> 18.-20.06.2022 Hotel Säntispark Wiesenbachstrasse 5 9030 Abtwil melissa.meza@gmos.ch +41 71 313 13 11	<b>JUMBO-VISMA WOMEN TEAM</b> 18.-21.06.2022 Hotel Neu-Schönstatt Josef-Kentenich-Weg 1 8883 Quarten info@hotel-neuschoenstatt.ch +41 81 511 02 50	<b>ROLAND COGEAS EDELWEISS SQUAD</b> 18.-20.06.2022 Buchserhof Grünaustrasse 2 9470 Buchs info@buchserhof.ch +41 81 755 70 70
20.-21.06.2022 Buchserhof Grünaustrasse 2 9470 Buchs info@buchserhof.ch +41 81 755 70 70	<b>LIV RACING XSTRA</b> 18.-20.06.2022 Hotel one66 Alte Bildstrasse 6 9015 St.Gallen roomsdivision@one66.ch +41 71 314 71 71	20.-21.06.2022 Hotel Schloss Ragaz Schloss- Strasse 1 7310 Bad Ragaz maechler@hotelschlossragaz.ch +41 81 303 77 77
<b>CERATIZIT - WNT PRO CYCLING TEAM</b> 18.-21.06.2022 Jufa Hotel Malbun Malbunstrasse 60 9497 Malbun malbun@jufahotels.com 00423 399 20 00	20.-21.06.2022 Marina Walensee Hotel Gostenstrasse 20 8882 Unterterzen reservation@marina-walensee.ch +41 81 720 31 00	<b>STADE ROCHELAIS CHARENTE-MARITIME WOMEN CYCLING</b> 18.-21.06.2022 Rocksresort Via Murschetg 15 7032 Laax cristina.fuchs@laax.com +41 81 927 71 66



**SWISS CYCLING  
NATIONALTEAM**

18. - 21.06.2022  
Hotel Sportcenter 5 Dörfer  
Oberauweg 186D  
7205 Zizers  
hotel@5doerfer.ch  
+41 81 307 19 90

**TEAM BIKEEXCHANGE - JAYCO**

18. - 20.06.2022  
Radisson Blu Hotel  
St. Jakobstr. 55  
9000 St.Gallen  
nicole.weber@radissonblu.com  
+41 71 242 12 12

20. - 21.06.2022  
Swiss Heidi Hotel  
Werkhofstrasse 1  
7304 Maienfeld  
info@swissheidihotel.ch  
+41 81 303 88 88

**TEAM COOP -  
HITEC PRODUCTS**

18. - 21.06.2022  
Rocksresort  
Via Murschetg 15  
7032 Laax  
cristina.fuchs@laax.com  
+41 81 927 71 66

**TEAM DSM**

18. - 20.06.2022  
Radisson Blu Hotel  
St. Jakobstr. 55  
9000 St.Gallen  
nicole.weber@radissonblu.com  
+41 71 242 12 12

20. - 21.06.2022  
Hotel Sportcenter 5 Dörfer  
Oberauweg 186D  
7205 Zizers  
hotel@5doerfer.ch  
+41 81 307 19 90

**TREK - SEGAFREDO**

18. - 21.06.2022  
Rocksresort  
Via Murschetg 15  
7032 Laax  
cristina.fuchs@laax.com  
+41 81 927 71 66

**UAE TEAM ADQ**

18. - 21.06.2022  
Rocksresort  
Via Murschetg 15  
7032 Laax  
cristina.fuchs@laax.com  
+41 81 927 71 66

**VALCAR - TRAVEL & SERVICE**

18. - 20.06.2022  
Alpenhotel Malbun  
Im Malbun 11  
9497 Malbun  
info@alpenhotel.li  
+423 263 11 81

20. - 21.06.2022  
Swiss Heidi Hotel  
Werkhofstrasse 1  
7304 Maienfeld  
info@swissheidihotel.ch  
+41 81 303 88 88

## HOTELS DIRECTORATE

18. - 20.06.2022  
Hotel Kommod  
Industriering 14  
9491 Rugell  
hotel@kommod.li  
+423 377 37 77

20. - 21.06.2022  
Hotel La Tgoma  
Voia Principala 37  
7083 Lantsch/Lenz  
info@latgoma.ch  
+41 81 681 12 78

## HOTEL DOCTORS

18. - 21.06.2022  
Hotel Restaurant Kulm  
Schlossstr.3  
9497 Triesenberg  
info@hotelkulm.li  
+423 237 79 79

# HOTEL UCI COMMISSIONAIRES

17. - 21.06.2022  
Grand Casino Liechtenstein AG  
Selemad 10  
9487 Gamprin  
y.dundar@gcli.li  
+423 222 77 77

## HOSPITAL LIST

**Emergency numbers**

144 - Emergency rescue service  
117 - Police  
118 - Fire station  
0800 140 140 - Break-down  
service  
112 - International  
emergency call

**1<sup>st</sup> & 2<sup>nd</sup> stage  
18<sup>th</sup> - 19<sup>th</sup> June**

**Vaduz - Vaduz**  
ATTENTION: STAGE WITH FEW  
HOSPITALS!  
**Central hospitals**  
Kantonsspital Graubünden  
Loëstrasse 170  
7000 Chur  
Tel: +41 (81) 256 61 11

**Regional hospitals**

Landesspital Liechtenstein  
Heiligkreuz 25  
9490 Vaduz  
Tel: +41 423 235 44 11

Spital Grabs  
Spitalstrasse 44  
9472 Grabs  
Tel: +41 81 772 51 11

**3<sup>rd</sup> stage**

**20<sup>th</sup> June**  
**Vaduz - Chur**  
**Central hospitals**  
Kantonsspital Graubünden  
Loëstrasse 170  
7000 Chur  
Tel: +41 (81) 256 61 11

Kantonsspital St. Gallen  
Rorschacherstrasse 95  
9000 St.Gallen  
Tel: +41 71 494 11 11

**Regional hospitals**

Landesspital Liechtenstein  
Heiligkreuz 25  
9490 Vaduz  
Tel: +41 423 235 44 11

Spital Grabs  
Spitalstrasse 44  
9472 Grabs  
Tel: +41 81 772 51 11

**4<sup>th</sup> stage**

**21<sup>st</sup> June**  
**Chur - Lantsch/Lenz**  
**Central hospitals**  
Kantonsspital Graubünden  
Loëstrasse 170  
7000 Chur  
Tel: +41 (81) 256 61 11

**Regional hospitals**

Spital Grabs  
Spitalstrasse 44  
9472 Grabs  
Tel: +41 81 772 51 11

Spital Davos  
Promenade 4  
7270 Davos  
Tel: +41 81 414 88 88

Spital Schiers  
Tersierstrasse 7  
7220 Schiers  
Tel: +41 81 308 08 08

# SIGNAGE

Race signage



Race office



Media



Bureau UCI



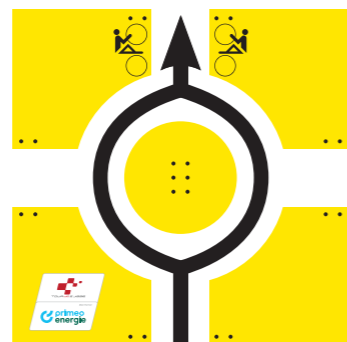
Medical Control



PPO



Race signage roundabouts



Race office



Equipes



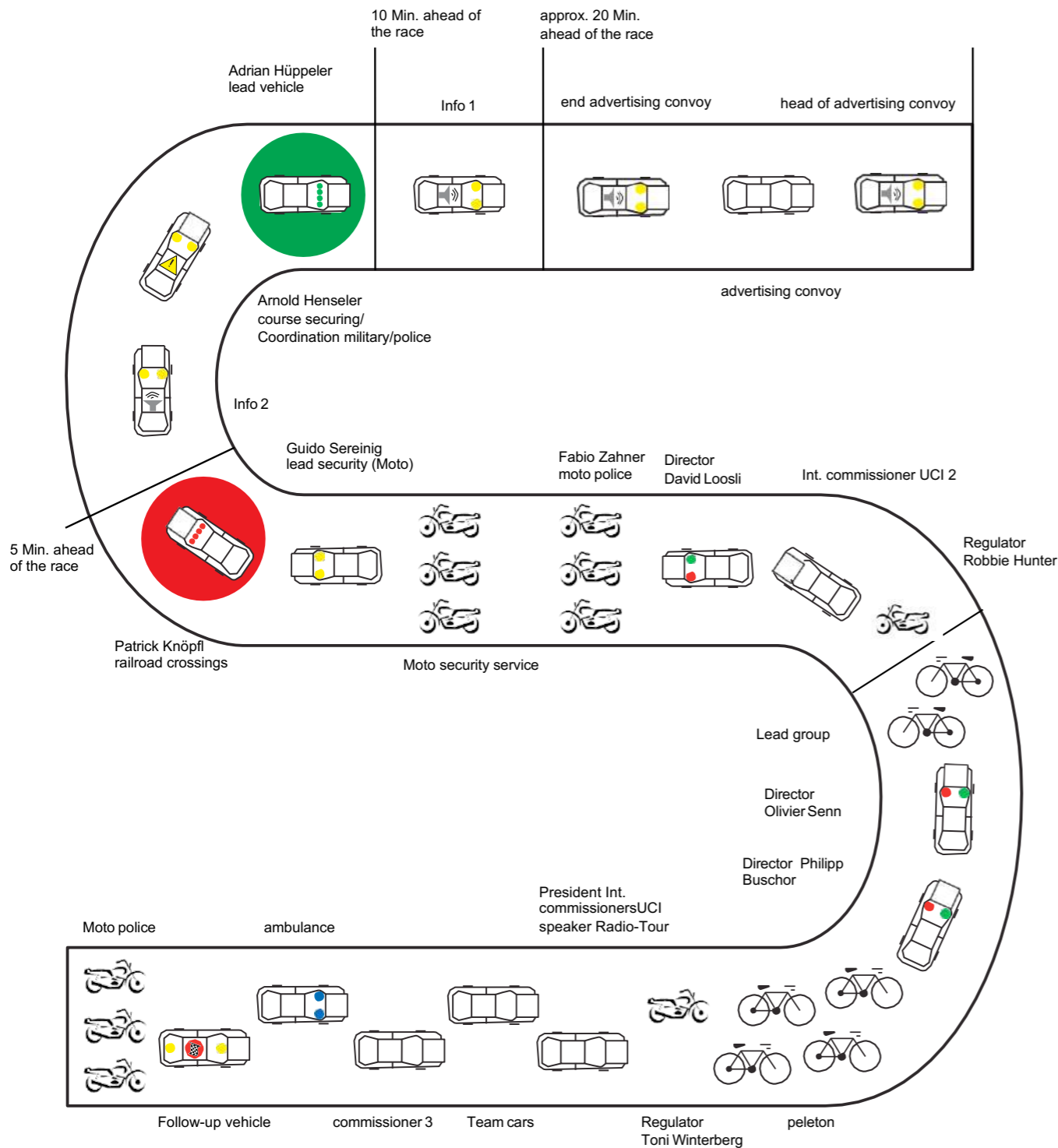
Commissaire



Distance signs



# CONVOY STRUCTURE



After the passage of the leading car with the 4 green rotating beacons (10 min. ahead of the race) the road user is not allowed to drive towards the race.

After the passage of the car with the 4 red rotating beacons (approx. 5 min. ahead of the race) the traffic is being stopped until the follow-up vehicle's passage.

After the follow-up car's passage the traffic can be re-opened.

# RULES OF THE RACE

## ARTICLE 1. ORGANISATION

The Tour de Suisse Women is organised by Verein Tour de Suisse (Sportstrasse 44, 2540 Grenchen) according to the rules of Union Cycliste Internationale (UCI). The tour will take place from 18 to 21 June 2022.

## ARTICLE 2. TYPE OF EVENT

The Tour de Suisse Women is open for the "Women Elite" category. It is listed in the UCI calendar. The race falls into the UCI 2.Pro class.

The UCI points distribution system is applied according to Article 2.10.017.

## ARTICLE 3. PARTICIPANTS

According to Article 2.1.005 of the UCI Rules the following teams are eligible to enter the race:

UCI Women's WorldTeams - UCI women's continental teams - UCI cyclo-cross professional teams - National teams - Regional and club teams.

According to Article 2.2.003 of the UCI rules, the number of registered riders is limited to 6.

Teams must be composed by minimum 4 and maximum 6 riders, Article 2.2.003bis.

## ARTICLE 4. RACE HEADQUARTERS

On Saturday 18 June 2022, race headquarters will be open from 8:00 a.m to 8:00 p.m. in the Vaduzersaal, Giessenstrasse 7, 9490 Vaduz.

The participants will be confirmed and the persons responsible for the teams can collect the start numbers from race headquarters between 8.30 a.m. and 9.45.a.m. on 18 June 2022.

The meeting of the team managers, which is organised in accordance with Article 2.2.093 of the UCI Rules, will be held in Vaduzersaal, Giessenstrasse 7, 9490 Vaduz at 10.00 a.m. on 18 June 2022, in the presence of the members of the Commissaires' Panel.

## ARTICLE 5. START OF THE RACE

According to Article 2.3.009 of the UCI Rules, the riders must have entered their names on the signature sheet no later than 15 minutes before the start of the race. Under threat of disqualification, it is mandatory for the riders to sign the start list.

## ARTICLE 6. RADIO TOUR

The information from Radio Tour can be received on the frequency 159.825 MHz. This service will be provided by TOPKOM for each stage.

## ARTICLE 7. NEUTRAL RACE SERVICE

The neutral race service will be provided by the Trek race service with 3 neutral service vehicles.

## ARTICLE 8. INCIDENTS DURING THE LAST 3 KILOMETERS

In the event of a properly ascertained fall, damage to tyres or technical defects during the last three kilometres of a day's stage, the rider who has suffered the accident shall be credited with the time of the rider accompanying him or her at the time of the accident. His or her ranking shall depend on the crossing of the finish line.

If it is not possible for a rider to cross the finish line due to a fall during the last three kilometres, he or she shall be put in last place for the stage and credited with the time of the rider accompanying him or her at the time of the accident.

According to Article 2.6.027 of the UCI Rules, this provision shall not apply for the following finishes: 2th stage in Vaduz, 4th stage in Lantsch.

## ARTICLE 9. CUT-OFF TIMES

The cut-off times have been determined in accordance with the characteristics of the stages, namely:

- Circuit stage:** 15% 1<sup>st</sup> stage
- Stages of medium difficulty:** 12% 3<sup>rd</sup> stage
- Mountain stages:** 15% 4<sup>th</sup> stage
- Time trials:** 25% 2<sup>nd</sup> stage



According to Article 2.6.032 of the UCI Rules, in unforeseeable, exceptional cases or in cases of force majeure, the Commissaires' Panel may alter the cut-off times after consulting the organiser.

#### ARTICLE 10. CLASSIFICATIONS - RANKINGS - TIME CREDITS (BONUSES)

The following time credits (bonuses) shall be granted in accordance with Articles 2.6.019 to 2.6.021:

- For each stage time credits of 10 s – 6 s – 4 s shall be granted at the finishing line for the three riders crossing the line.
- For each search.ch sprint ranking, time credits of 3 s – 2 s – 1 s shall be awarded to the first three riders.

The time bonuses shall be assigned solely to the overall classification.

#### A. Individual overall ranking according to time

Article 2.6.014 of the UCI Rules: The individual overall ranking according to time shall be created by adding the times registered in each stage.

The leader in the individual overall ranking according to time shall wear the yellow PRIMEO ENERGIE jersey.

According to Article 2.6.015 of the UCI Rules, the fractions of seconds measured during the individual time trial stages shall be added together in the case of a tie in the individual overall ranking according to time, in order to distinguish between riders with identical times.

If this too results in a tie or if there are no individual time trial stages, the total places achieved at each stage will be used and in the final instance the place achieved in the last stage of the race

#### B. Queen of the Mountains classification

The Queen of the Mountains classification shall be calculated by adding the points achieved during the 7 Queen of the Mountains rankings.

The points shall be allocated as follows:

	1 <sup>st</sup> cat.	3 <sup>rd</sup> cat.
1 <sup>st</sup>	12 Pt.	3 Pt.
2 <sup>nd</sup>	8 Pt.	2 Pt.
3 <sup>rd</sup>	6 Pt.	1 Pt.
4 <sup>th</sup>	4 Pt.	
5 <sup>th</sup>	2 Pt.	

An overall Queen of the Mountains ranking shall be created according to the number of points achieved in all Queen of the Mountains rankings. The leader in the classification shall wear the red Queen of the mountain jersey.

According to Article 2.6.017 of the UCI Rules, the following criteria shall be applied to determine the ranking order in the case of equal scores in the final Queen of the Mountains classification:

1. Number of first places in the highest category of the Queen of the Mountains ranking.
2. Number of first places in the next lowest category etc.
3. Individual overall ranking according to time

To qualify for prizes according to the final Queen of the Mountains classification, the winners must have completed the entire route of the tour within the set cut-off times in accordance with Article 2.6.032 of the UCI Rules.

#### C Point classification search.ch

The point classification is calculated by adding the points achieved on reaching the finishing line and in the search.ch sprint rankings. The points shall be allocated as follows:

#### Reaching the finishing line:

The points shall be allocated as follows for stages 1 – 4:

1 <sup>st</sup>	12 points
2 <sup>nd</sup>	8 points
3 <sup>rd</sup>	6 points
4 <sup>th</sup>	4 points
5 <sup>th</sup>	2 points

#### Interim sprints:

The points shall be allocated as follows for each of the 6 search.ch sprints:

1 <sup>st</sup>	4 points
2 <sup>nd</sup>	2 points
3 <sup>rd</sup>	1 point

Points can be gained in each of the Supersapiens interim sprints of the following stages:

1 <sup>st</sup> stage	Lettstrasse	18.4 km
	Lettstrasse	41.4 km
3 <sup>rd</sup> stage	Churerstrasse	86.5 km
	Landstrasse	110.5 km
4 <sup>th</sup> stage	Bahnhofstrasse	59.7 km

Hauptstrasse 417 91.8 km

The leader in the classification shall wear the black search.ch jersey.

In the case of equal scores in the final sprint points classification, the following criteria shall be applied to determine the ranking order:

1. Number of stage wins
2. Number of wins in the sprint rankings
3. Individual overall ranking according to time

To qualify for prizes according to the final sprint points classification, the winners must have completed the entire route of the tour within the set cut-off points in accordance with Article 2.6.032 of the UCI Rules.

#### D. “Best young rider” in the general Lend.ch classification

The classification the “best young rider” is for all riders born at 1st January 1997 or later.

The best young rider in the general classification shall wear the white Lend jersey.

#### 2. Team classification

According to Article 2.6.016 of the UCI Rules, the team classification for the day shall be created from the total of the times of the first 3 riders of each team. In the case of equal scores, the places of the teams shall be determined by adding the times achieved by their first three riders for the stage. If the scores are still equal, the places shall be calculated on the basis of the best rider for each team in the ranking for the stage. The overall team classification shall be calculated from the total of the three best individual times for each team in all stages of the race. In the case of equal scores the following criteria shall be used to determine the ranking order:

1. Number of first places in the team ranking for the day
2. Number of second places in the team ranking for the day etc.

If the scores are still equal after this, the teams shall be differentiated on the basis of their best riders in the individual overall ranking. All teams with fewer than 3 riders shall be excluded from the overall team ranking.

#### ARTICLE 11. PRIZES

The following prizes and special awards shall be awarded for the Tour de Suisse:

	For each stage	Overall classification
1 <sup>st</sup>	€ 800	€ 4'500
2 <sup>nd</sup>	€ 400	€ 1'700
3 <sup>rd</sup>	€ 350	€ 1'100
4 <sup>th</sup>	€ 300	€ 800
5 <sup>th</sup>	€ 250	€ 700
6 <sup>th</sup>	€ 200	€ 600
7 <sup>th</sup>	€ 160	€ 500
8 <sup>th</sup>	€ 160	€ 400
9 <sup>th</sup>	€ 150	€ 300
10 <sup>th</sup>	€ 140	€ 200
11 <sup>th</sup>	€ 100	€ 150
12 <sup>th</sup>	€ 100	€ 150
13 <sup>th</sup>	€ 100	€ 150
14 <sup>th</sup>	€ 100	€ 125
15 <sup>th</sup>	€ 100	€ 125
16 <sup>th</sup>	€ 90	€ 100
17 <sup>th</sup>	€ 80	€ 100
18 <sup>th</sup>	€ 80	€ 100
19 <sup>th</sup>	€ 80	€ 100
20 <sup>th</sup>	€ 80	€ 100
	€ 3'810	€ 12'000

After each stage

Wearer of the yellow jersey € 100.00  
(Total € 300 for 3 stages)

#### Total stage & overall classification

€ 27'540.00

#### 2. Mountains classification

Queen of the Mountains:

For the first rider

1<sup>st</sup> cat. € 250.00  
3<sup>rd</sup> cat. € 150.00  
(Total € 1'350.00)

After each stage

Wearer of the red Queen of the Mountains jersey € 100.00  
(Total € 300 for 3 stages)

Overall final classification

1<sup>st</sup> € 500.00  
2<sup>nd</sup> € 250.00  
3<sup>rd</sup> € 100.00  
(Total € 850)

#### Total prizes “Queen of the Mountains classification”

€ 2'500.00

**3. Point classification search.ch**

For each sprint (6 sprints)

1 <sup>st</sup>	€ 200.00
	(Total € 1'200)

After each stage

Wearer of the black sprint jersey	€ 100.00
	(Total € 300 for 3 stages)

Overall final classification

1 <sup>st</sup>	€ 500.00
2 <sup>nd</sup>	€ 250.00
3 <sup>rd</sup>	€ 100.00
	(Total € 850)

**Total prizes for “Points classification search.ch.” € 2'350.00**

**4. Best young rider classification**

After each stage

Wearer of the white Lend.ch jersey	€ 200.00
	(Total € 600 for 3 stages)

Overall final classification

1 <sup>st</sup>	€ 250.00
2 <sup>nd</sup>	€ 150.00
3 <sup>rd</sup>	€ 100.00
	(Total € 500)

**“Best young rider” prizes total € 1'100.00**

The total prize money for the Tour de Suisse shall amount to:

**€ 33,490.00**

**ARTICLE 12.****ANTI-DOPING**

The anti-doping checks shall be carried out in accordance with the UCI Rules. The checks shall be carried out in the medical inspection vehicle, which shall always be located immediately beyond the finish line after each stage.

**ARTICLE 13.****PODIUM CEREMONY**

According to Article 1.2.112 of the UCI Rules, it is compulsory for the following riders to take part in the podium ceremony:

- the winner of the stage
- the leaders of the following special classifications: overall classification, Queen of the Mountains classification, points classification, as well as ‘best young rider’.

The riders shall appear on the podium behind the finishing line right after their arrival

The following riders have to take part in the final podium ceremony:

- the first three of the Tour de Suisse Women
- the winners of the special classifications: overall classification, Queen of the Mountains classification, points classification, best young rider

The leader in each ranking must wear the corresponding leader jersey. If a rider is leading in several classifications, Article 2.6.018 of the UCI Rules shall apply as regards the wearing of the various jerseys.

At the start of every stage, the wearers of the 4 ranking jerseys – PRIMEO ENERGIE, Swiss-Cycling-Family, search.ch and Lend – must position themselves in the first row 5 minutes before the start. A penalty will be imposed for failure to appear, Article 2.12.007 of the UCI Rules.

Press conference: According to Articles 2.2.081 and 2.2.082 of the UCI Rules, the organiser may call upon riders to attend a press conference in the press room.

**ARTICLE 14.****PENALTIES**

All penalties shall be handled according to the UCI Rules.

**ARTICLE 15.****ENVIRONMENTAL PROTECTION**

The riders are not allowed to carelessly jettison food, backpacks, bottles, clothes etc. They are not allowed to throw any items onto the track. Biologically degradable material must be used wherever possible. It is not permitted to use or carry glass, Article 2.2.025 of the UCI Rules.

The litter zones are signposted along the route in accordance with Article 2.3.026 of the UCI Rules.

**ARTICLE 16.****INSPECTIONS TO PREVENT TECHNICAL CHANGES TO BICYCLES**

After each stage the Commissionaires Panel may stipulate that certain riders have to appear in the zone beyond the finishing line intended for inspection, together with the bicycle used in the stage in question, immediately after crossing the finishing line. These inspections shall be carried out in accordance with Article 10.1.013bis of the UCI Rules.

## MEDIA INFORMATION

### Media officer and responsible media centre

Ueli Anken  
+41 79 638 18 18  
media@tds.ch

### Stage 2 HUB VADUZ

Vaduzersaal  
Giessenstrasse 7  
9490 Vaduz

### Opening hours:

Sunday, 19<sup>th</sup> June 09:00 – 20:00

### Stage 4 Lantsch/Lenz

Roland Arena  
Voia da Bual 1  
7083 Lantsch/Lenz

### Opening hours:

Tuesday, 21<sup>th</sup> June 12:00 – 20:00

### Locations media centre

### Stage 1 HUB VADUZ

Vaduzersaal  
Giessenstrasse 7  
9490 Vaduz

### Opening hours:

Saturday, 18<sup>th</sup> June 12:00 – 23:00

### Stage 3 Chur

PH GR Chur  
Scalärastrasse 17  
7000 Chur

### Opening hours:

Monday, 20<sup>th</sup> June 12:00 – 21:00

## TV BROADCASTING



### SRF2

1<sup>st</sup> stage from 19.25  
2<sup>nd</sup> stage from 11:10  
3<sup>rd</sup> stage from 15:35  
4<sup>th</sup> stage from 15:35



### RTS2

1<sup>st</sup> stage from 19.15\*  
2<sup>nd</sup> stage from 11:00  
3<sup>rd</sup> stage from 15:25  
4<sup>th</sup> stage from 15:25

\*livestream RTS Sport App

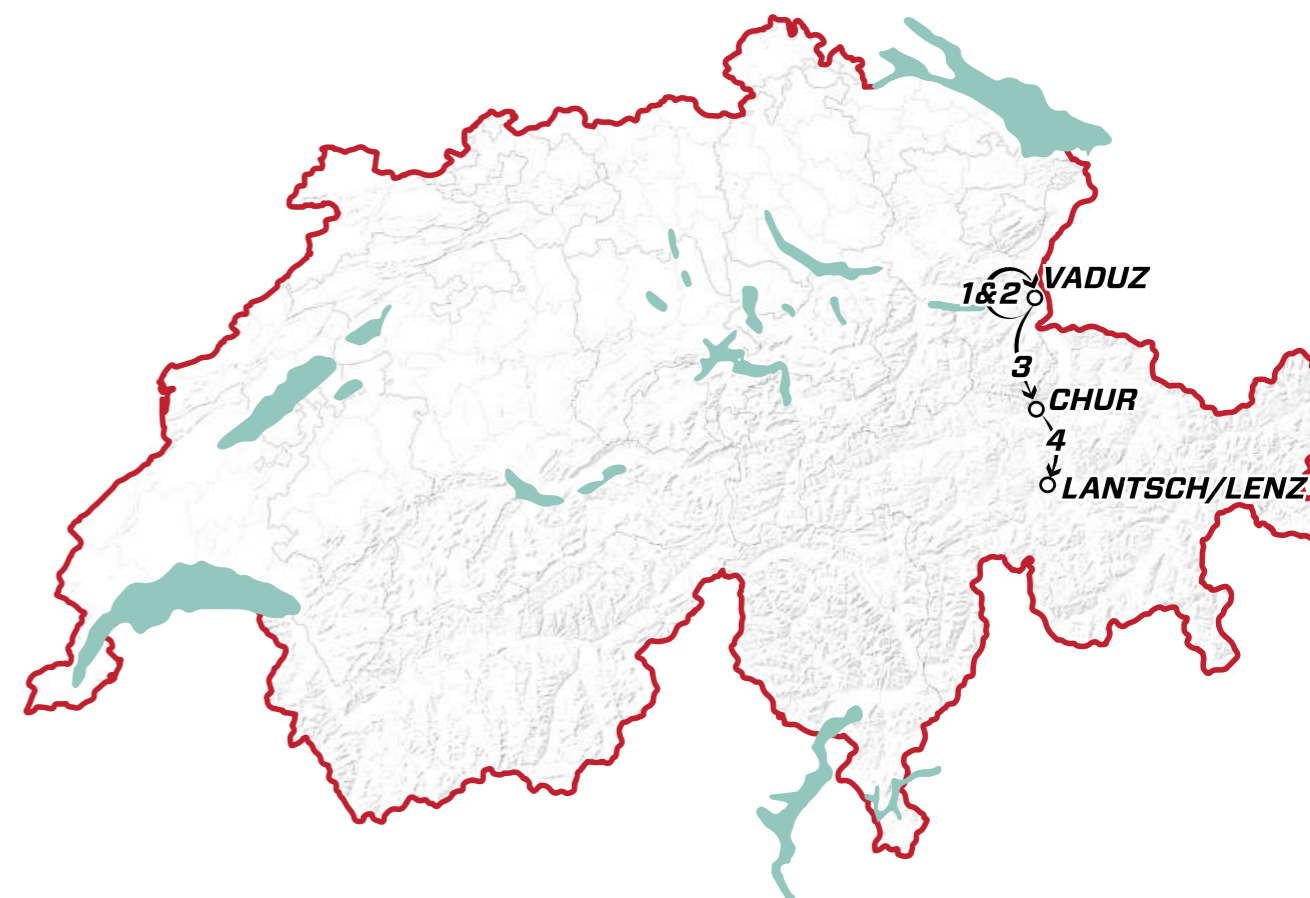


### RSI LA1

1<sup>st</sup> stage from 19.30  
2<sup>nd</sup> stage from 11.10\*  
3<sup>rd</sup> stage from 15.40  
4<sup>th</sup> stage from 15.40

\*livestream RSI Sport App,  
recording from 13.10 on RSILA2

## ROUTE



Stage	Day	Date	Start	Finish	Characteristics
1 <sup>st</sup> Stage	Saturday	18.06.	Vaduz	Vaduz	Circuit race
2 <sup>nd</sup> Stage	Sunday	19.06	Vaduz	Vaduz	Individual time trial
3 <sup>rd</sup> Stage	Monday	20.06	Vaduz	Chur	Hilly stage
4 <sup>th</sup> Stage	Tuesday	21.06	Chur	Lantsch/Lenz	Mountain stage

## MEETING PLAN VADUZ

Date	from	to	Meeting	Location	Participants
<b>Saturday, 18<sup>th</sup> June</b>	08h30	20h00	Opening hours race office	Vaduzersaal Giessenstrasse 7 9490 Vaduz	Media/Partner/Staff
	12h00	23h00	Opening hours media centre	Vaduzersaal Giessenstrasse 7 9490 Vaduz	Media
	08h30	09h45	Licence control, bib number distribution	Vaduzersaal Giessenstrasse 7 9490 Vaduz	Commissaires Teams
	10h00		Meeting sports directors	Vaduzersaal Giessenstrasse 7 9490 Vaduz	Organisation Commissaires Teams
	18h00	19h15	Presentation Teams	Village Rathusgasse 9490 Vaduz	Organisation Teams

## IMPORTANT INFORMATION

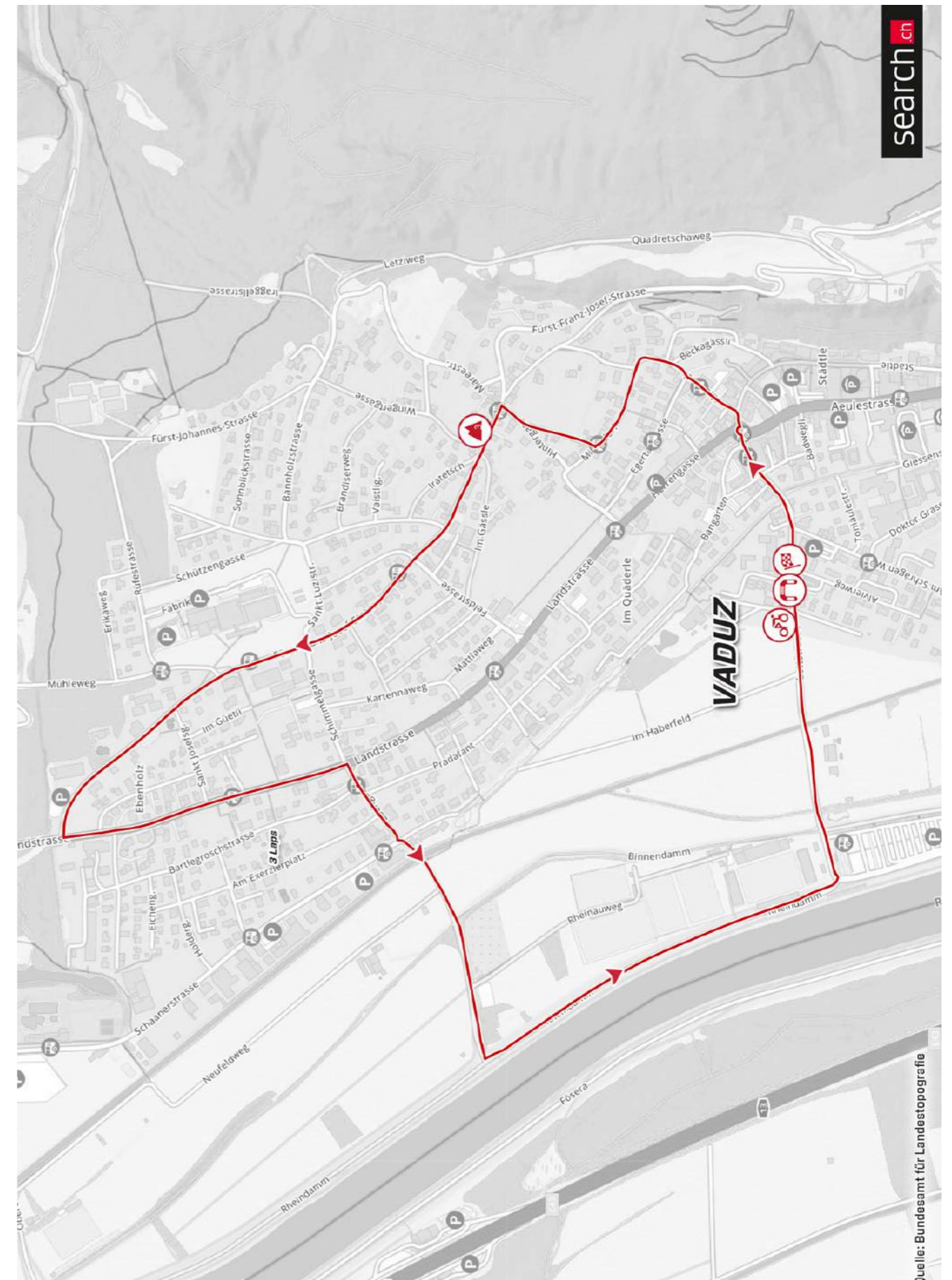
Stage		Location	Km	Times
<b>1<sup>st</sup> stage</b>	<b>Saturday, 18<sup>th</sup> June</b>	<b>Vaduz - Vaduz</b>	<b>46</b>	
<b>Vaduz</b>	Permanence	Vaduzersaal		08:30 - 20:00*
	Media Centre	Vaduzersaal		12:00 - 23:00
	Village and Showtruck	Rathausgasse		15:00 - 21:00
	Bike Expo und Kids World	Rathausgasse		15:00 - 21:00
	Presentation Teams	Showtruck, Rathausgasse		18:00 - 19:15
	VIP Zone	Städle 4		18:30 - 21:30
	TV broadcasting			19:25 - 21:00
	Start	Lettstrasse		19:30
	1 <sup>st</sup> passage finish	Lettstrasse		19:37
	2 <sup>nd</sup> passage finish	Lettstrasse		19:43
	3 <sup>rd</sup> passage finish	Lettstrasse		19:50
	4 <sup>th</sup> passage finish	Lettstrasse		19:57
	5 <sup>th</sup> passage finish	Lettstrasse		20:04
	6 <sup>th</sup> passage finish	Lettstrasse		20:10
	7 <sup>th</sup> passage finish	Lettstrasse		20:17
8 <sup>th</sup> passage finish	Lettstrasse		20:24	
9 <sup>th</sup> passage finish	Lettstrasse		20:30	
Finish	Lettstrasse		20:45	
<b>2<sup>nd</sup> stage</b>	<b>Sunday, 19<sup>th</sup> June</b>	<b>Vaduz - Vaduz</b>	<b>25.6</b>	
<b>Vaduz</b>	Permanence Start	Vaduzersaal		09:00 - 17:30*
	Media centre	Vaduzersaal		09:00 - 20:00
	Village und Showtruck HUB	Rathausgasse		10:00 - 18:00
	Bike Expo und Kids World HUB	Rathausgasse		10:00 - 18:00
	VIP Zone	Peter-Kaiser-Platz		09:00 - 17:30
	Start 1 <sup>st</sup> rider	Lettstrasse		10:11
	Finish 1 <sup>st</sup> rider	Peter-Kaiser-Platz		10:46
	TV broadcasting			11:10 - 13:05
	Start last rider	Lettstrasse		12:10
	Finish last rider	Peter-Kaiser-Platz		12:45

\*The permanence will be closed 30 minutes before until about 30 minutes after the finish of every stage.

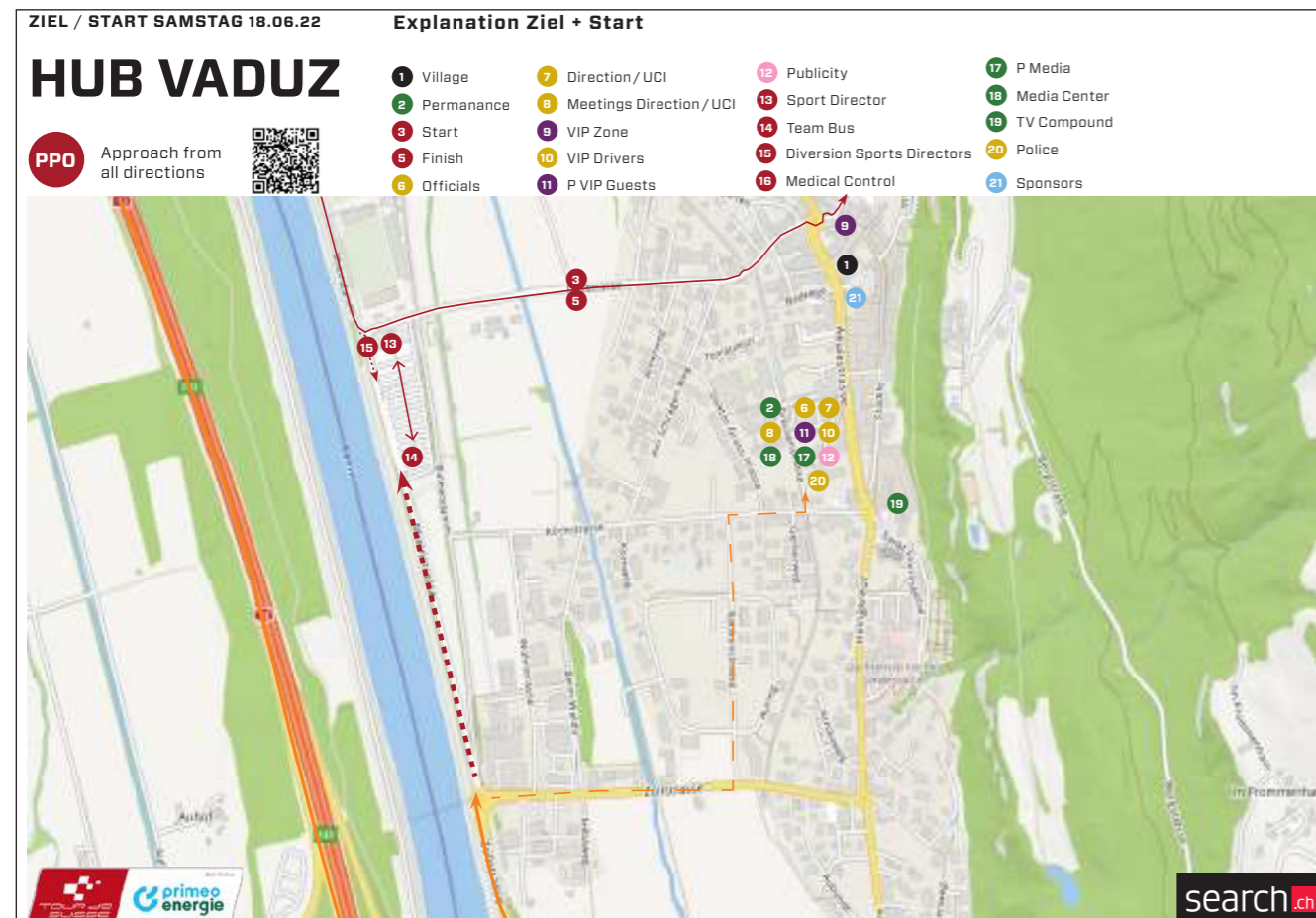
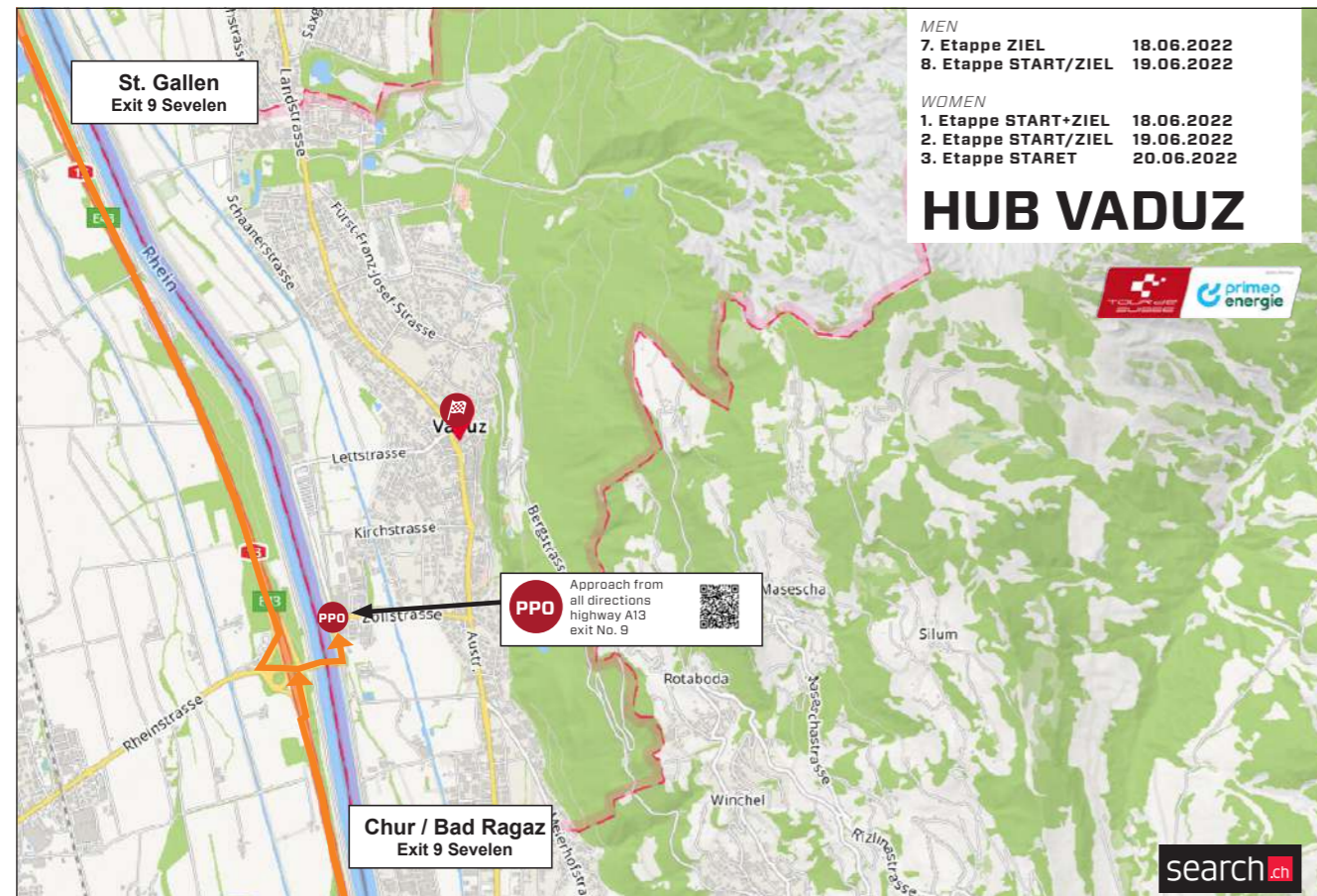
Stage		Location	Km	Times
<b>3<sup>rd</sup> stage</b>	<b>Monday, 20<sup>th</sup> June</b>	<b>Vaduz - Chur</b>	<b>124.2</b>	
<b>Vaduz</b>	Permanence Start	Riderslounge/Showtruck, Peter-Kaiser-Platz		12:00 - 13:30
	Presentation Riders	Riderslounge/Showtruck, Peter-Kaiser-Platz		12:45 - 13:45
	VIP Zone	Peter-Kaiser-Platz		12:00 - 14:30
	Start	Peter-Kaiser-Platz		14:00
<b>Chur</b>	Media centre	PH GR, Scalärastrasse 17, Chur		12:00 - 21:00
	Permanence Finish	PH GR, Scalärastrasse 17, Chur		15:00 - 18:00*
	Village	Waldhaus Stall		15:00 - 17:30
	VIP Zone	Waldhaus Stall		15:00 - 18:00
	TV broadcasting			15:35 - 17:30
	Finish	Waldhaus Stall		17:20
<b>4<sup>th</sup> stage</b>	<b>Wednesday, 15<sup>th</sup> June</b>	<b>Chur - Lantsch/Lenz</b>	<b>98.5</b>	
<b>Chur</b>	Permanence Start	Riderslounge/Showtruck, Kornplatz		12:30 - 13:45
	Presentation Riders	Riderslounge/Showtruck, Kornplatz		13:05 - 14:05
	VIP Zone	Kornplatz		12:00 - 14:30
	Start	Kornplatz		14:20
<b>Lantsch/Lenz</b>	Media centre	Roland Arena, Lantsch/Lenz		12:00 - 20:00
	Permanence Finish	Roland Arena, Lantsch/Lenz		15:00 - 18:00*
	Village	Roland Arena, Lantsch/Lenz		14:30 - 18:00
	VIP Zone	Roland Arena, Lantsch/Lenz		15:00 - 18:30
	Finish	Roland Arena, Lantsch/Lenz		17:20

\*The permanence will be closed 30 minutes before until about 30 minutes after the finish of every stage.

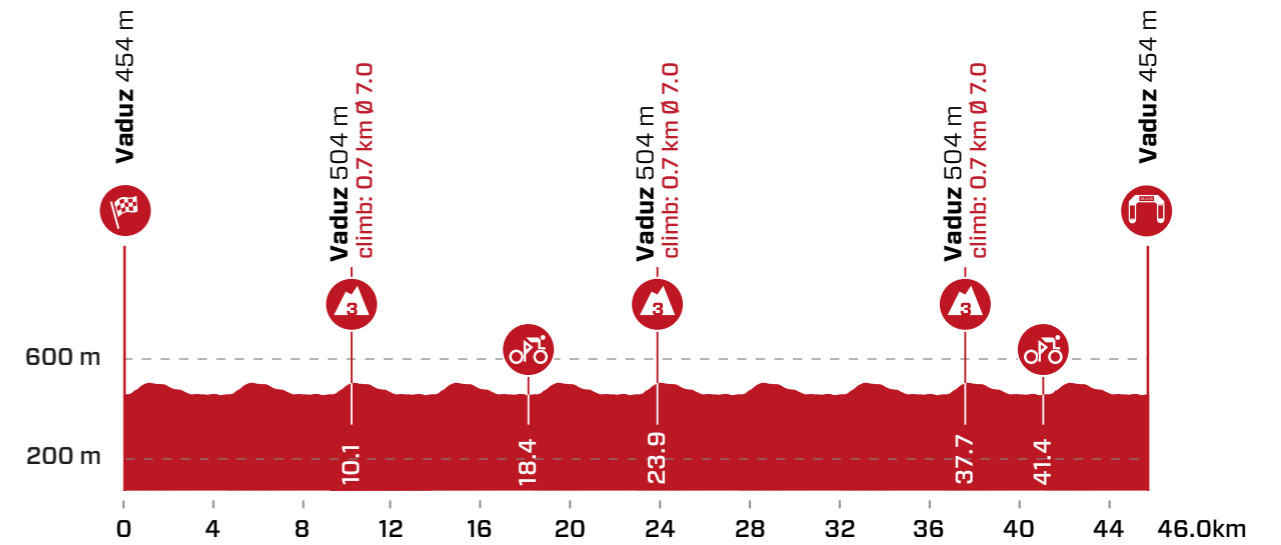
# 1<sup>ST</sup> STAGE VADUZ - VADUZ



# ROUTE & TRAFFIC PLAN VADUZ



# RACE SCHEDULE



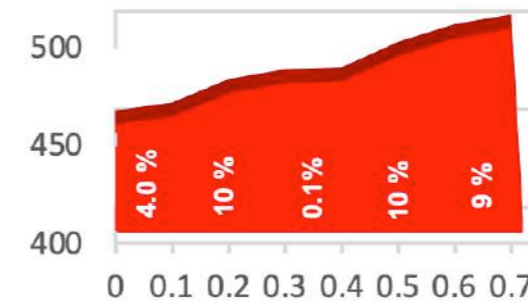
Ascent	▲ 650 m	Total time	1 h 13 min
Descent	▼ 650 m	Average Speed	38 km/h

m ü. M.	km	km	Location	Advertising convoy	Average speed km/h
		36			38
		40			40

Neutralisation 2 Km	Lettsstrasse - Altenbach - Kasparigasse - Fürst-Franz-Josef-Str.			
454	0.0	46.0	Start Lettsstrasse	19:30 19:30 19:30
456	0.3	45.7	Roundabout straight, Altenbach	19:30 19:30 19:30
504	0.9	45.1	Turn left, Fürst-Franz-Josef-Strasse	Road island 19:31 19:31 19:31
474	2.1	43.9	Turn left, Landstrasse	Road islands 3x 19:33 19:33 19:33
470	2.7	43.3	Turn right, Lochgasse	Road islands 2x 19:34 19:34 19:34
461	3.3	42.7	Turn left, Rheindamm	19:35 19:35 19:35
461	4.0	42.0	Turn left, Lettsstrasse	19:37 19:36 19:36
454	4.6	41.4	1st Passage finish Lettsstrasse	19:38 19:37 19:37
456	4.9	41.1	Roundabout straight, Altenbach	19:38 19:38 19:37
504	5.5	40.5	Turn left, Fürst-Franz-Josef-Strasse	Road island 19:39 19:39 19:38
474	6.7	39.3	Turn left, Landstrasse	Road islands 3x 19:41 19:40 19:40
470	7.3	38.7	Turn right, Lochgasse	Road islands 2x 19:42 19:41 19:41
461	7.9	38.1	Turn left, Rheindamm	19:43 19:42 19:41
461	8.6	37.4	Turn left, Lettsstrasse	19:44 19:43 19:42
454	9.2	36.8	2nd Passage finish Lettsstrasse	19:45 19:44 19:43
456	9.5	36.5	Roundabout straight, Altenbach	19:46 19:45 19:44
504	10.1	35.9	Turn left, Fürst-Franz-Josef-Strasse	GPM 19:47 19:46 19:45
474	11.3	34.7	Turn left, Landstrasse	Road islands 3x 19:49 19:48 19:46
470	11.9	34.1	Turn right, Lochgasse	Road islands 2x 19:50 19:49 19:47
461	12.5	33.5	Turn left, Rheindamm	19:51 19:50 19:48
461	13.2	32.8	Turn left, Lettsstrasse	19:52 19:51 19:49
454	13.8	32.2	3rd Passage finish Lettsstrasse	19:53 19:52 19:50
456	14.1	31.9	Roundabout straight, Altenbach	19:53 19:52 19:51

m ü. M.	km	km	Location	Adver- tising convoy	Average speed km/h		
					36	38	40
504	14.7	31.3	Turn left, Fürst-Franz-Josef-Strasse	Road island	19:54	19:53	19:51
474	15.9	30.1	Turn left, Landstrasse	Road islands 3x	19:56	19:55	19:53
470	16.5	29.5	Turn right, Lochgasse	Road islands 2x	19:57	19:56	19:54
461	17.1	28.9	Turn left, Rheindamm		19:58	19:57	19:55
461	17.8	28.2	Turn left, Lettstrasse		20:00	19:58	19:56
454	18.4	27.6	4 <sup>th</sup> Passage finish Lettstrasse	search.ch Sprint	20:01	19:59	19:57
456	18.7	27.3	Roundabout straight, Altenbach		20:01	19:59	19:57
504	19.3	26.7	Turn left, Fürst-Franz-Josef-Strasse	Road island	20:02	20:00	19:58
474	20.5	25.5	Turn left, Landstrasse	Road islands 3x	20:04	20:02	20:00
470	21.1	24.9	Turn right, Lochgasse	Road islands 2x	20:05	20:03	20:01
461	21.7	24.3	Turn left, Rheindamm		20:06	20:04	20:02
461	22.4	23.6	Turn left, Lettstrasse		20:07	20:05	20:03
454	23.0	23.0	5 <sup>th</sup> Passage finish Lettstrasse		20:08	20:06	20:04
456	23.3	22.7	Roundabout straight, Altenbach		20:09	20:07	20:04
504	23.9	22.1	Turn left, Fürst-Franz-Josef-Strasse	GPM	20:10	20:08	20:05
474	25.1	20.9	Turn left, Landstrasse	Road islands 3x	20:12	20:10	20:07
470	25.7	20.3	Turn right, Lochgasse	Road islands 2x	20:13	20:10	20:07
461	26.3	19.7	Turn left, Rheindamm		20:14	20:11	20:08
461	27.0	19.0	Turn left, Lettstrasse		20:15	20:13	20:09
454	27.6	18.4	6 <sup>th</sup> Passage finish Lettstrasse		20:16	20:13	20:10
456	27.9	18.1	Roundabout straight, Altenbach		20:16	20:14	20:11
504	28.5	17.5	Turn left, Fürst-Franz-Josef-Strasse	Road island	20:17	20:15	20:12
474	29.7	16.3	Turn left, Landstrasse	Road islands 3x	20:19	20:17	20:13
470	30.3	15.7	Turn right, Lochgasse	Road islands 2x	20:20	20:18	20:14
461	30.9	15.1	Turn left, Rheindamm		20:21	20:19	20:15
461	31.6	14.4	Turn left, Lettstrasse		20:23	20:20	20:16
454	32.2	13.8	7 <sup>th</sup> Passage finish Lettstrasse		20:24	20:21	20:17
456	32.5	13.5	Roundabout straight, Altenbach		20:24	20:21	20:17
504	33.1	12.9	Turn left, Fürst-Franz-Josef-Strasse	Road island	20:25	20:22	20:18
474	34.3	11.7	Turn left, Landstrasse	Road islands 3x	20:27	20:24	20:20
470	34.9	11.1	Turn right, Lochgasse	Road islands 2x	20:28	20:25	20:21
461	35.5	10.5	Turn left, Rheindamm		20:29	20:26	20:22
461	36.2	9.8	Turn left, Lettstrasse		20:30	20:27	20:23
454	36.8	9.2	8 <sup>th</sup> Passage finish Lettstrasse		20:31	20:28	20:24
456	37.1	8.9	Roundabout straight, Altenbach		20:32	20:28	20:24
504	37.7	8.3	Turn left, Fürst-Franz-Josef-Strasse	GPM	20:33	20:29	20:25
474	38.9	7.1	Turn left, Landstrasse	Road islands 3x	20:35	20:31	20:27
470	39.5	6.5	Turn right, Lochgasse	Road islands 2x	20:36	20:32	20:28
461	40.1	5.9	Turn left, Rheindamm		20:37	20:33	20:29
461	40.8	5.2	Turn left, Lettstrasse		20:38	20:34	20:30
454	41.4	4.6	9 <sup>th</sup> Passage finish Lettstrasse	search.ch Sprint	20:39	20:35	20:30
456	41.7	4.3	Roundabout straight, Altenbach		20:39	20:36	20:31
504	42.3	3.7	Turn left, Fürst-Franz-Josef-Strasse	Road island	20:40	20:37	20:32
474	43.5	2.5	Turn left, Landstrasse	Road islands 3x	20:42	20:39	20:34
470	44.1	1.9	Turn right, Lochgasse	Road islands 2x	20:43	20:40	20:34
461	44.7	1.3	Turn left, Rheindamm		20:44	20:40	20:35
461	45.4	0.6	Turn left, Lettstrasse		20:46	20:42	20:36
454	46.0	0.0	Finish Lettstrasse		20:47	20:43	20:37

**VADUZ**  
 Length: 0.7 km    Ø Gradient in %: 7.0

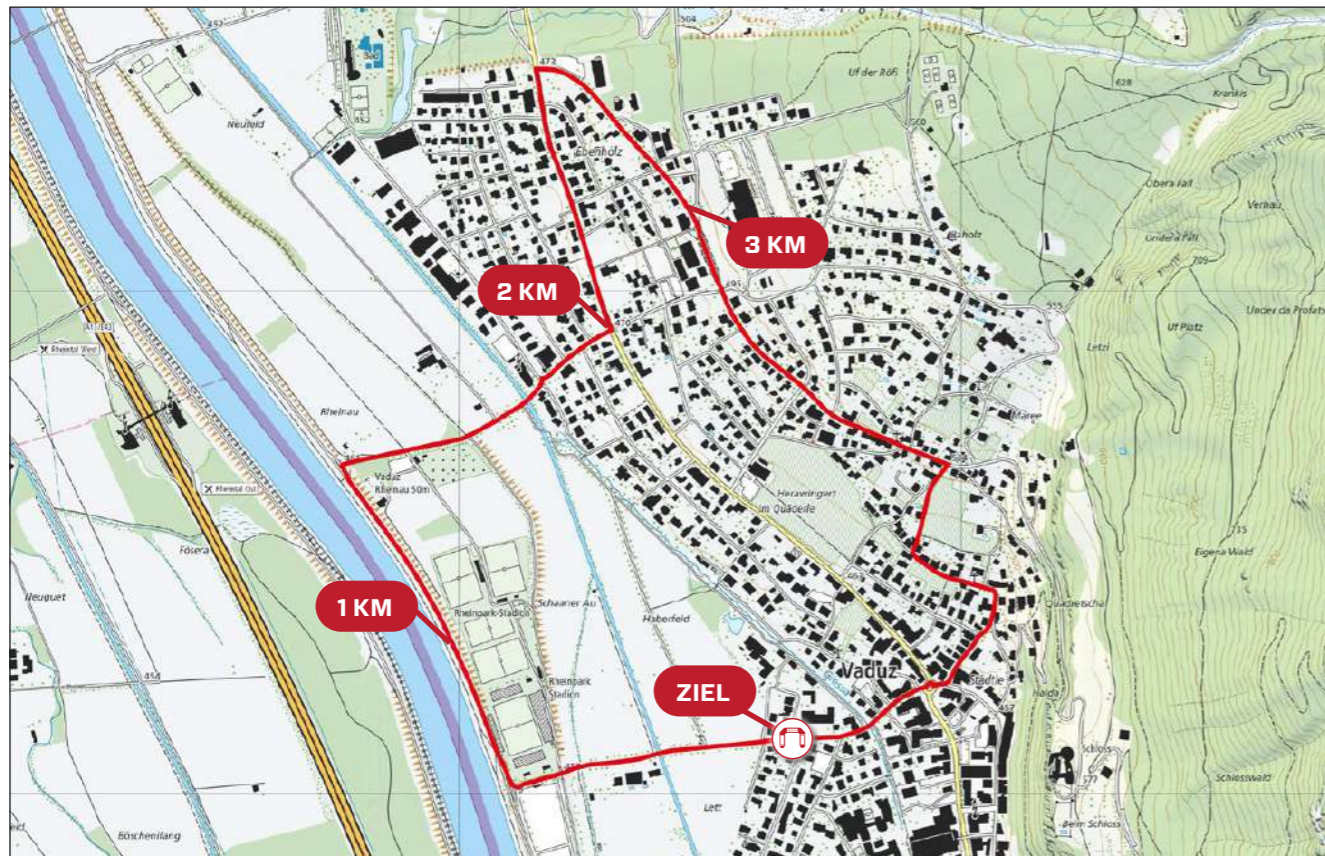
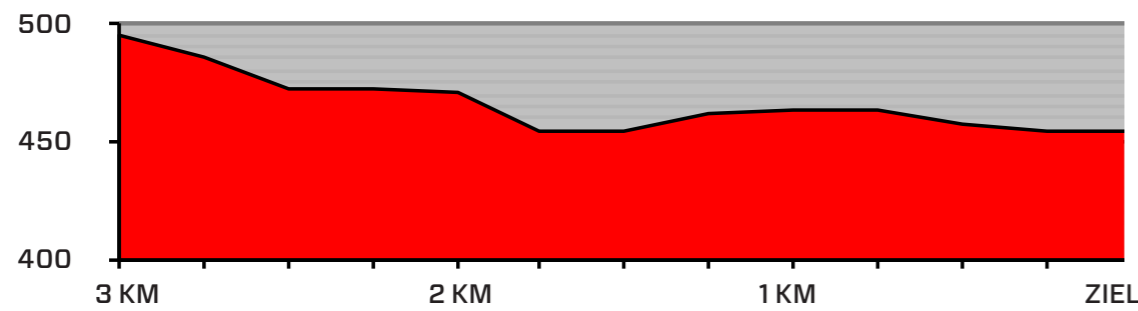


### GPS DATA

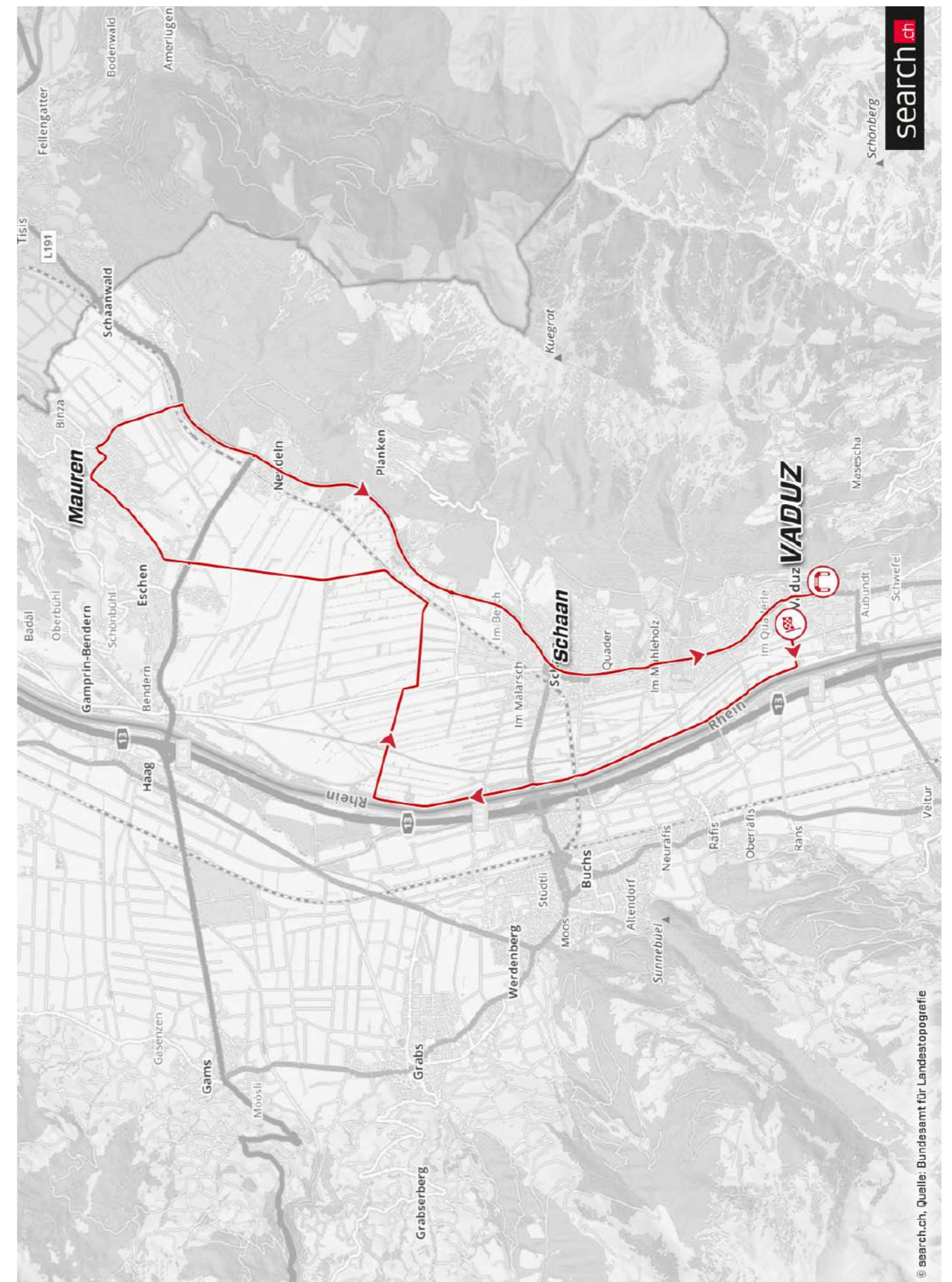


PPO

### LAST 3 KILOMETERS



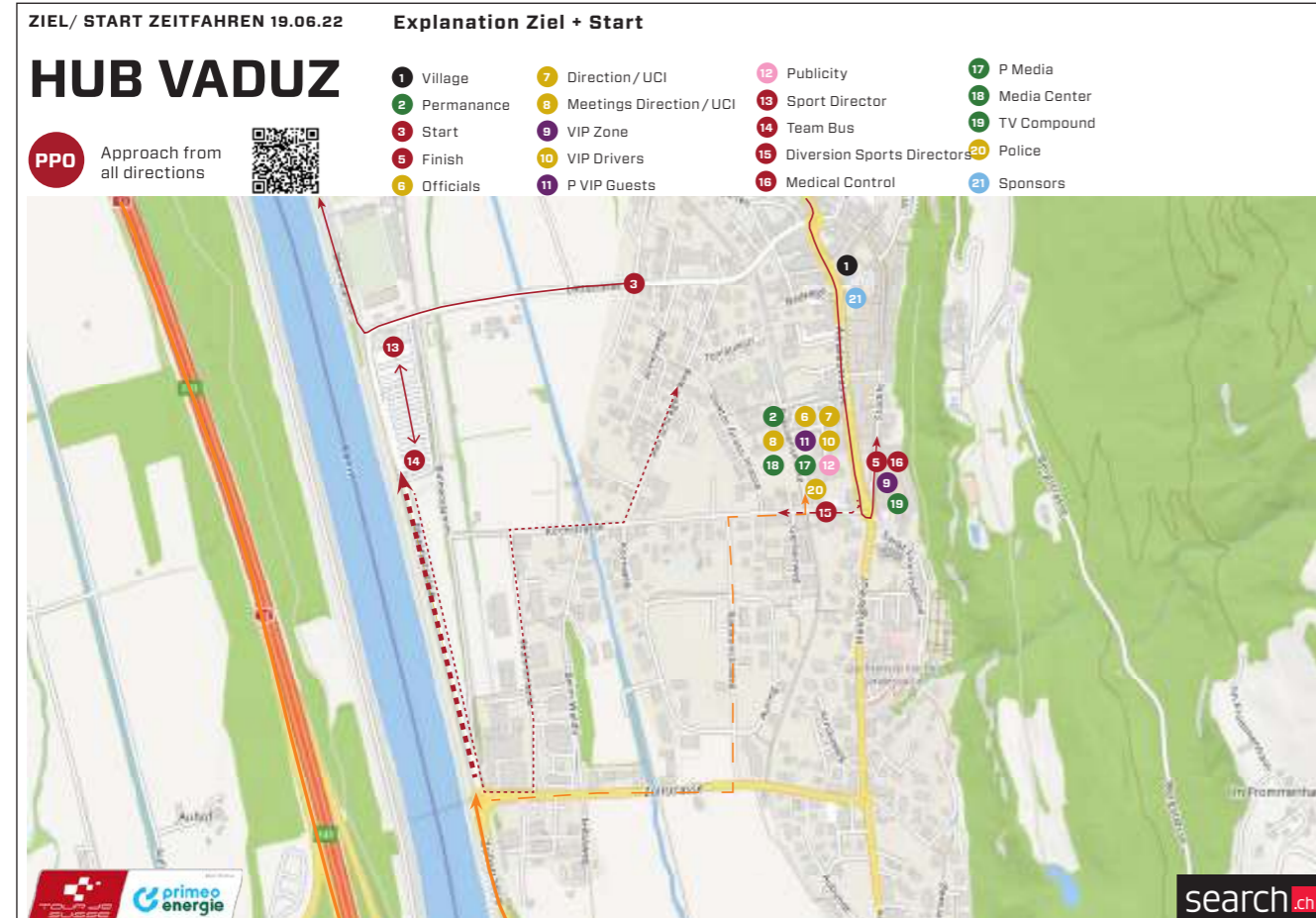
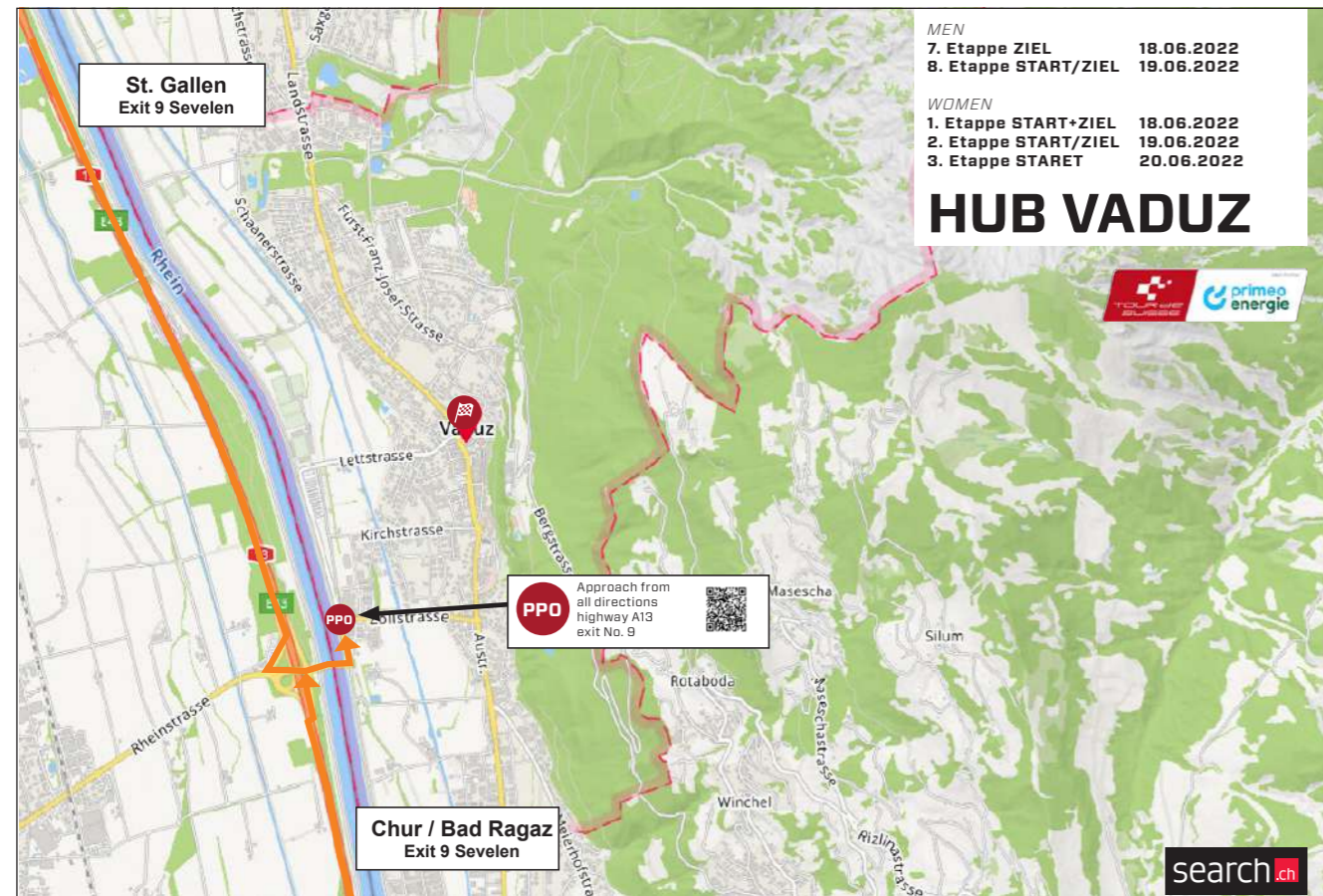
### 2<sup>ND</sup> STAGE VADUZ – VADUZ



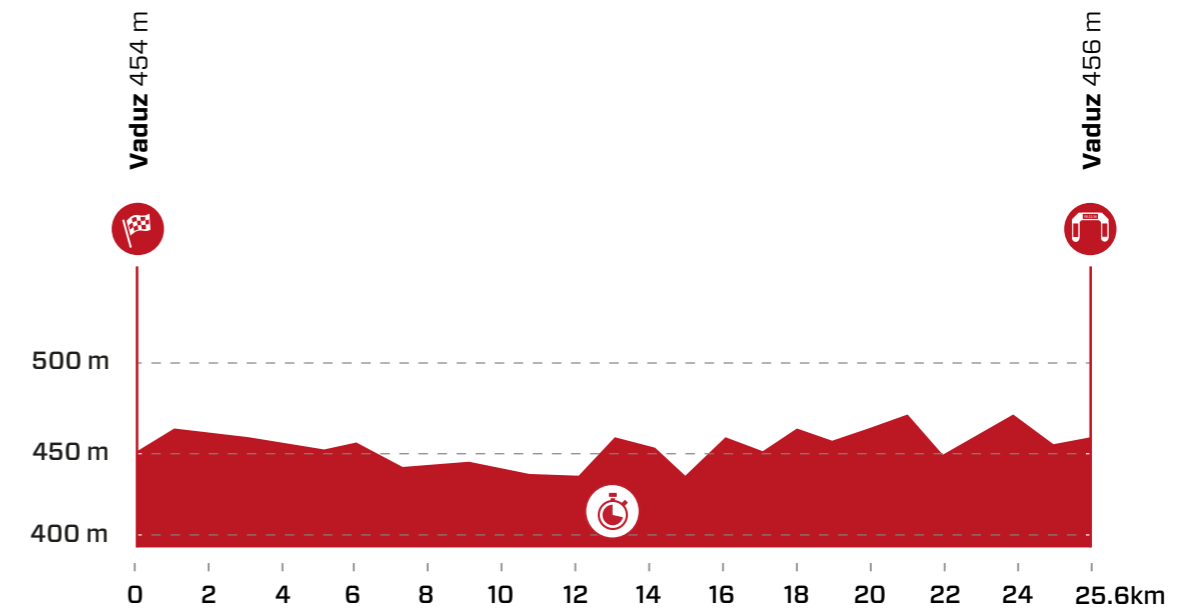
© search.ch, Quelle: Bundesamt für Landestopografie



## ROUTE & TRAFFIC PLAN VADUZ



## RACE SCHEDULE



Ascent	▲140 m	Total time	34 min 54 sec
Descent	▼138 m	Average Speed	44 km/h

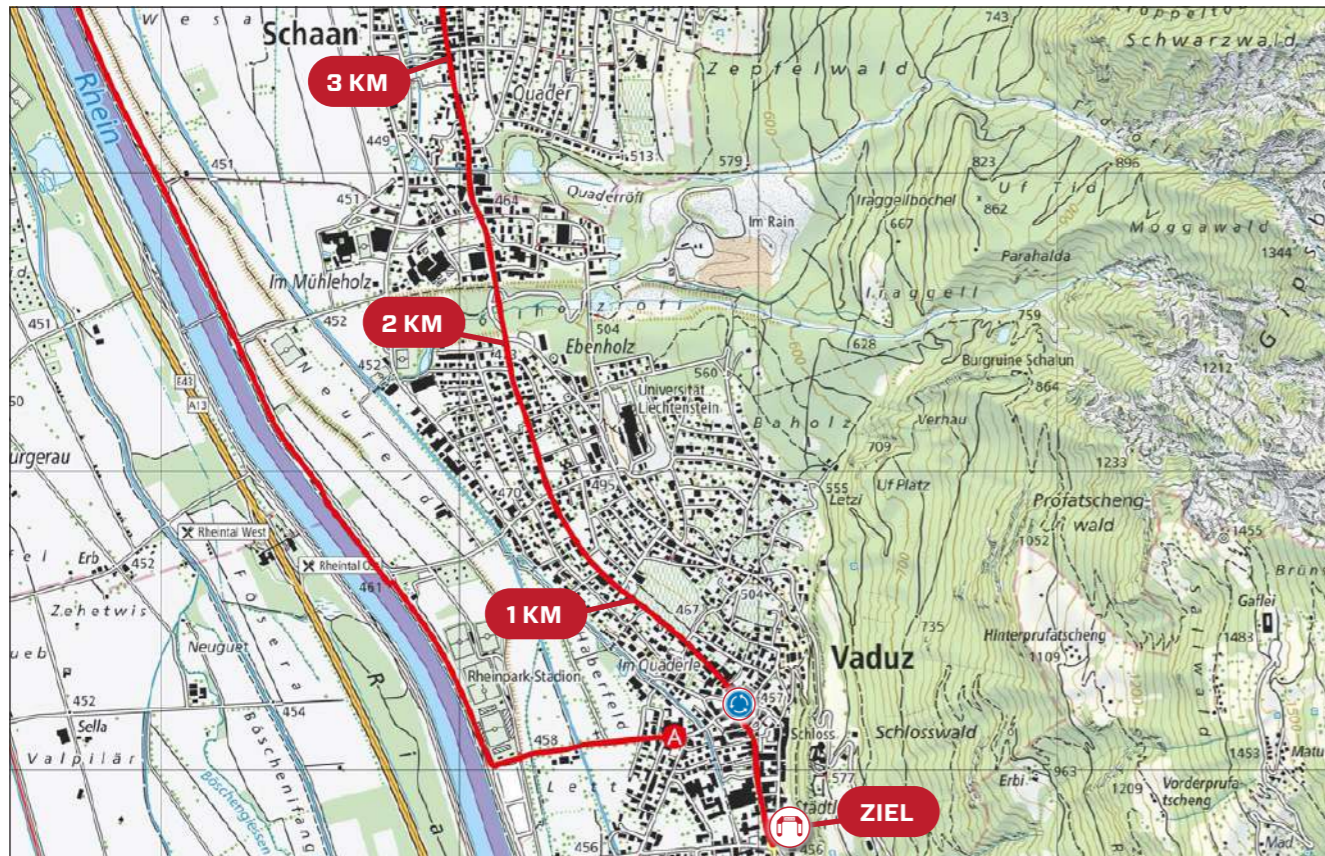
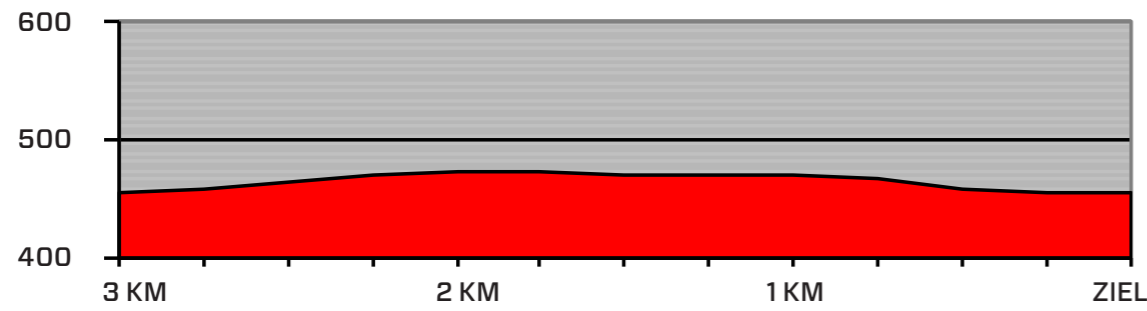
m ü. M.	km	km	Location	Advertising convey	First Start	Last Start
454	0.0	25.6	Lettstrasse		12:11	10:11 12:10
463	0.6	25.0	Turn right, Rheindamm		12:12	10:11 12:10
453	5.8	19.8	Turn right, Medergass		12:20	10:19 12:18
443	7.2	18.4	Turn right, Benderer-Str.		12:25	10:20 12:19
444	7.4	18.2	Turn left, Rietsträssle		12:30	10:21 12:20
448	8.4	17.2	Turn left, Schwarz Strässle		12:35	10:22 12:21
440	12.0	13.6	Roundabout straight, Kohlplatz		12:40	10:26 12:25
440	12.1	13.5	Eschen		12:40	10:26 12:25
444	12.9	12.7	Fallsg.	split time	12:41	10:27 12:26
454	13.8	11.8	Mauren		12:42	10:28 12:27
457	16.3	9.3	Turn right, Voralbergerstrasse	Road island	12:45	10:33 12:32
453	16.7	8.9	Nendeln	Road islands 6x	12:46	13:27 16:10
464	20.7	4.9	Roundabout straight, Feldkircher Strasse		12:50	10:39 12:38
465	20.8	4.8	Schaan	Road islands 3x	12:50	10:39 12:38
470	23.5	2.1	Vaduz	Road islands 4x	12:53	10:43 12:42
455	25.1	0.5	Roundabout straight,		12:55	10:45 12:44
456	25.5	0.1	Roundabout left, Städtle		13:00	10:45 12:44
456	25.6	0.0	Finish		13:10	10:46 12:45

### GPS DATA

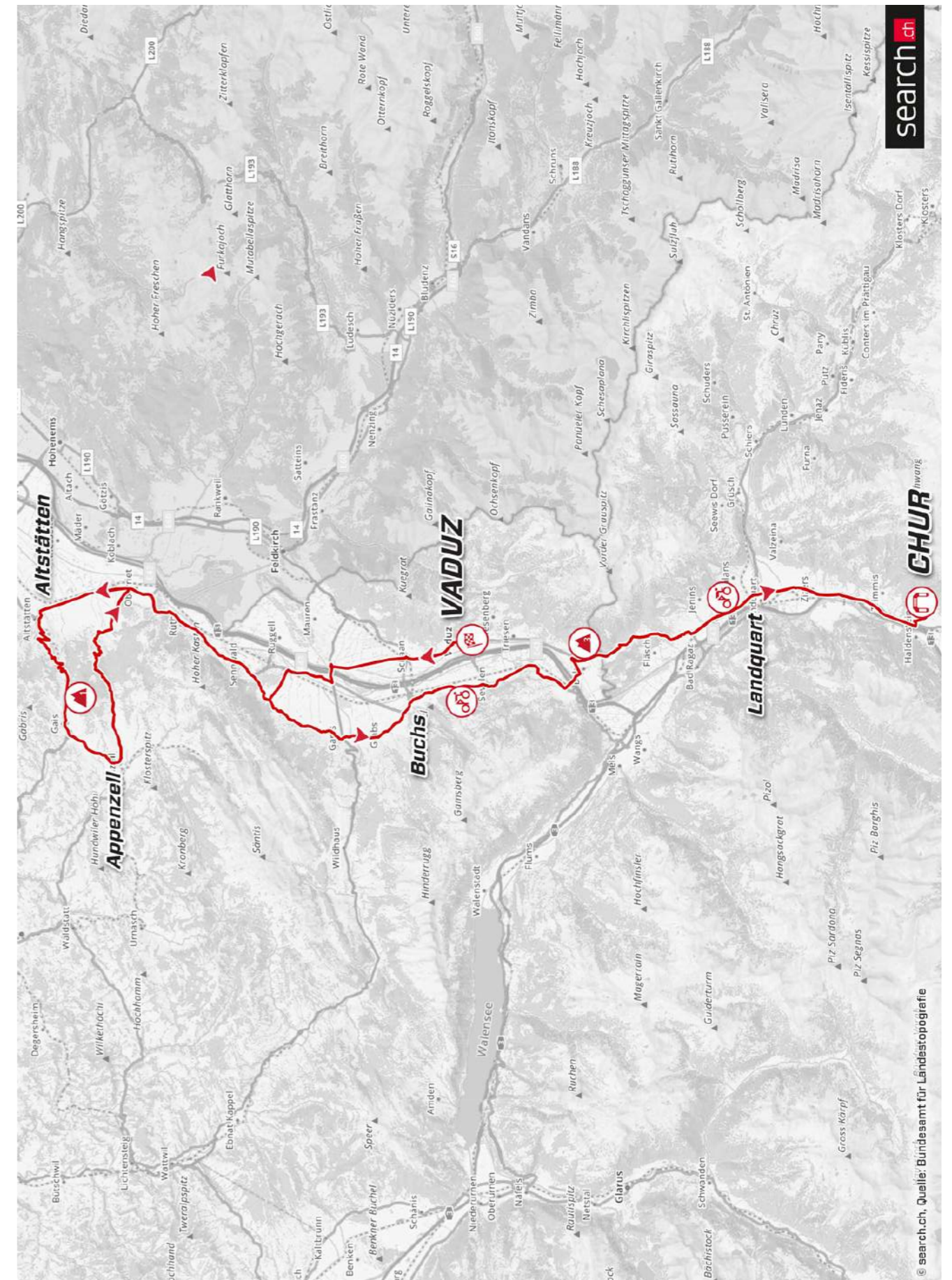


PPO

### LAST 3 KILOMETERS

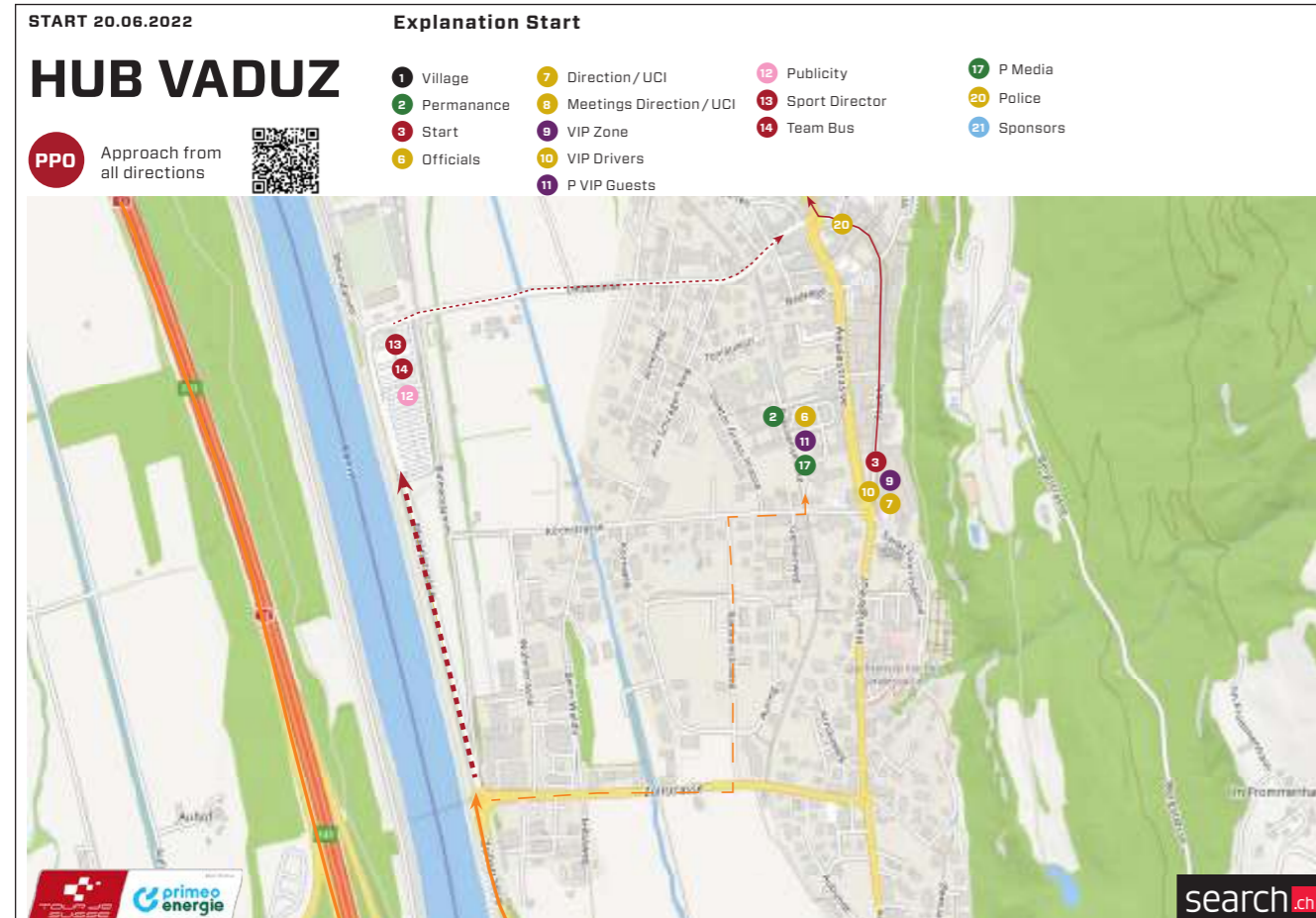
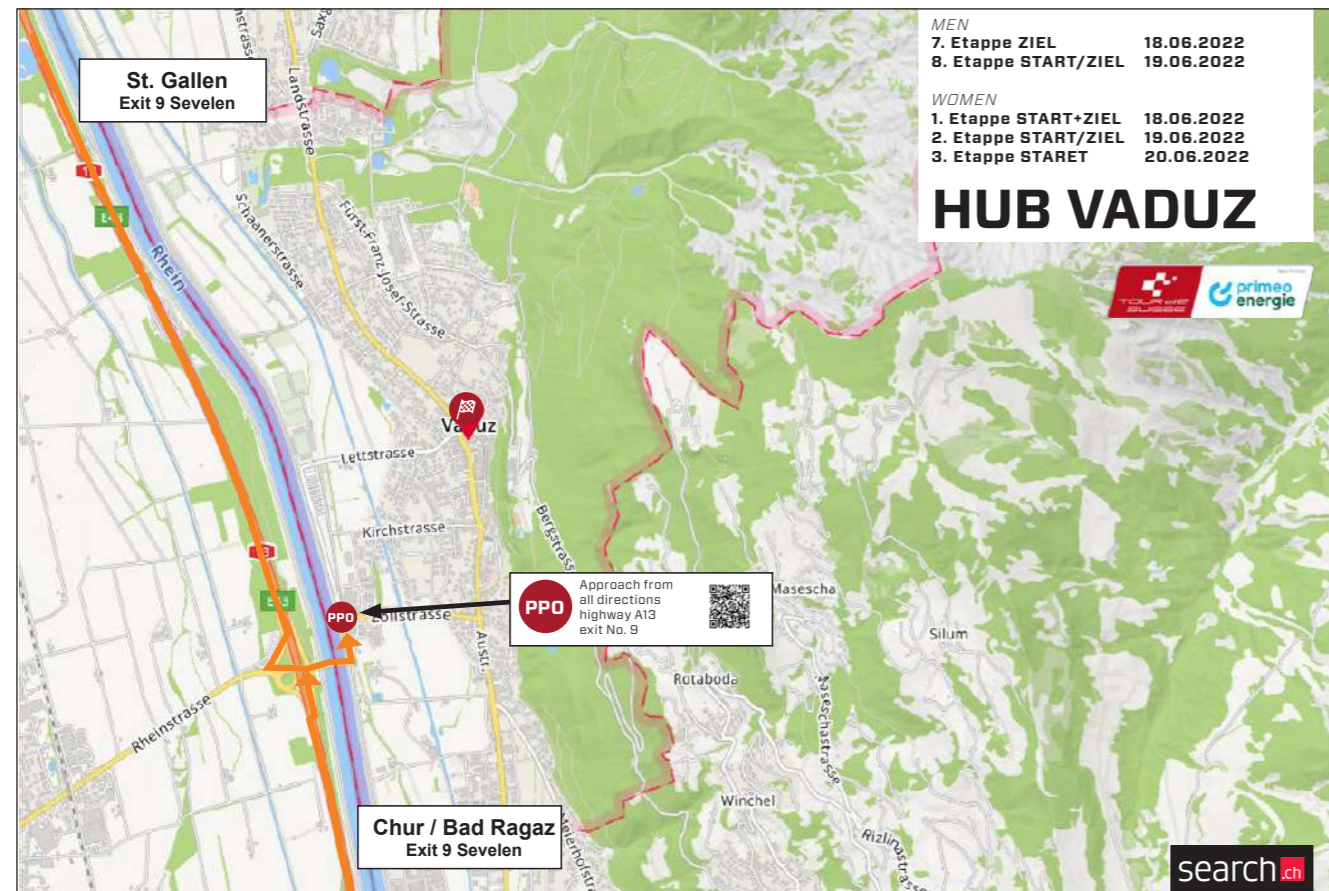


### 3<sup>RD</sup> STAGE VADUZ – CHUR

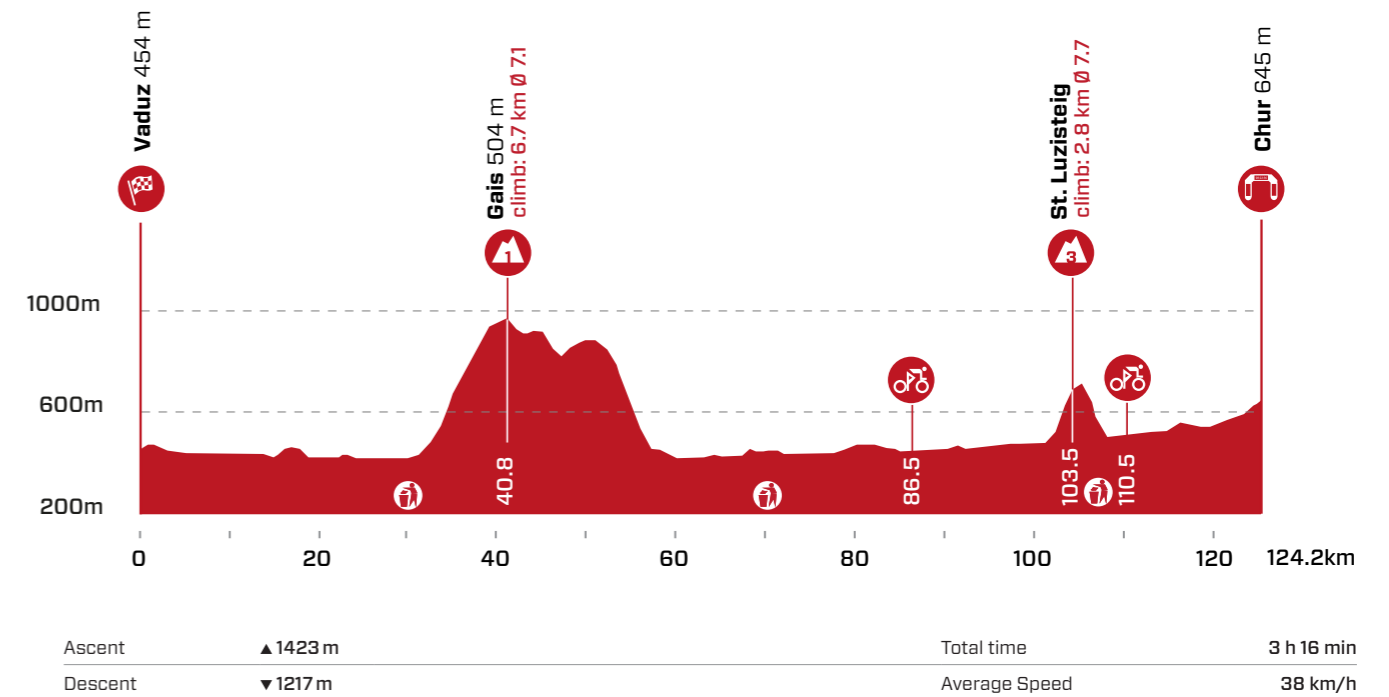


© search.ch, Quelle: Bundesamt für Landestopografie

## ROUTE & TRAFFIC PLAN VADUZ



## RACE SCHEDULE

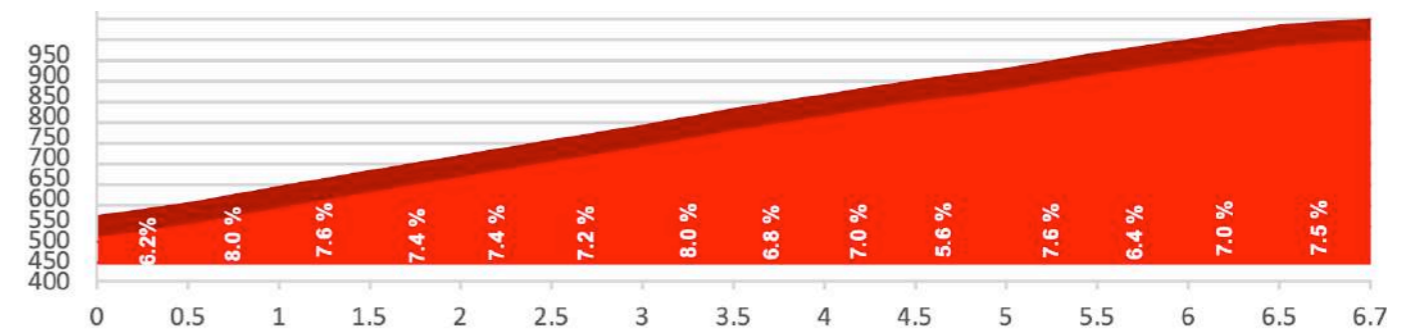


m ü. M.	km	km	Location	Advertising convoy	Average speed km/h			
					36	38	40	
			Neutralisation 1 Km	Städtle - Hauptstrasse 28	13:00	14:00	14:00	14:00
455	0.0	124.2	Vaduz	Road islands 3x	13:03	14:03	14:03	14:03
449	1.3	122.9	Schaan	Road islands 2x	13:05	14:05	14:05	14:05
450	2.7	121.5	Turn left, Poststrasse		13:07	14:07	14:07	14:07
450	2.8	121.4	Turn right, Im Bretscha	Road islands 2x	13:07	14:07	14:07	14:07
450	3.0	121.2	Im Bretscha	Railroad crossing	13:07	14:08	14:07	14:07
446	4.0	120.2	Roundabout straight, Benderer Strasse	Road island	13:09	14:09	14:09	14:08
442	7.5	116.7	Bendern	Road island	13:13	14:14	14:13	14:13
443	7.7	116.5	Roundabout right, Im Schwibboga	Road island	13:14	14:14	14:14	14:13
443	7.8	116.4	Roundabout right, Eschner Strasse	Road islands 3x	13:14	14:14	14:14	14:13
440	9.0	115.2	Turn right, Salezerstrasse	Road islands 2x	13:16	14:16	14:16	14:15
439	9.2	115.0	Haag	Road islands 2x	13:16	14:16	14:16	14:15
438	11.7	112.5	Salez		13:19	14:20	14:19	14:18
438	12.0	112.2	Turn left, Frümserstrasse	Road island	13:20	14:21	14:20	14:19
448	15.2	109.0	Frümsen	Road islands	13:21	14:22	14:21	14:20
448	15.4	108.8	Turn right, Holengass		13:22	14:23	14:22	14:21
459	16.5	107.7	Sennwald		13:23	14:24	14:23	14:22
453	17.5	106.7	Turn left, Äugstisriet	Road island	13:25	14:26	14:25	14:24
445	18.5	105.7	Lienz		13:27	14:28	14:27	14:26
428	20.5	103.7	Rüthi	Road island	13:30	14:31	14:30	14:29
447	23.1	101.1	Moos		13:34	14:36	14:34	14:32
422	24.5	99.7	Oberriet	Road island	13:36	14:37	14:36	14:34
421	24.7	99.5	Roundabout left, Staatsstrasse		13:36	14:38	14:36	14:34

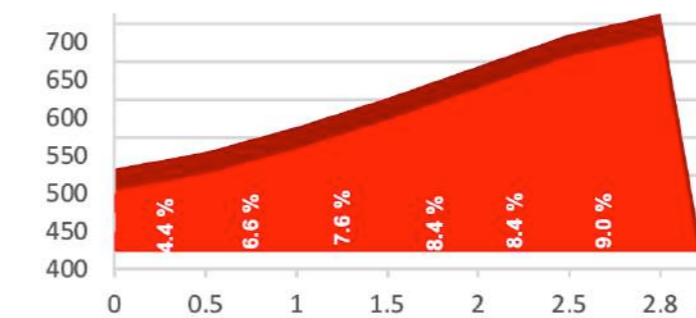
m ü. M.	km	km	Location	Adver- tising convoy	Average speed km/h			
					36	38	40	
422	30.6	93.6	Roundabout straight, Oberrietstrasse	Green Zone	13:45	14:47	14:45	14:43
455	31.2	93.0	Altstätten	Road islands 2x	13:46	14:49	14:46	14:44
463	32.6	91.6	Turn left, Klausstrasse		13:49	14:51	14:49	14:46
465	33.1	91.1	Stossstrasse	Railroad	13:49	14:52	14:49	14:47
821	37.9	86.3	Stossstrasse	Railroad crossing	14:05	15:08	15:05	15:02
945	40.8	83.4	Stossstrasse	GPM	14:12	15:16	15:12	15:09
920	42.8	81.4	Gais	Road island	14:15	15:19	15:15	15:11
908	43.4	80.8	Langgasse	Railroad crossing / Road island	14:16	15:20	15:16	15:12
907	43.6	80.6	Roundabout straight, Appenzellerstrasse		14:16	15:20	15:16	15:12
898	45.7	78.5	Appenzell Meistersrüte		14:19	15:23	15:19	15:15
825	47.3	76.9	Hirschberg		14:20	15:25	15:20	15:17
818	47.4	76.8	Roundabout left, Entlastungsstrasse		14:21	15:25	15:21	15:17
812	47.8	76.4	Turn left, Eggerstandenstrasse	Road islands 2x	14:21	15:25	15:21	15:17
883	50.5	73.7	Appenzell Eggerstanden		14:26	15:31	15:26	15:22
883	50.7	73.5	Turn left, Eichbergstrasse		14:26	15:31	15:26	15:22
500	56.5	67.7	Turn right, Händlistrasse		14:33	15:38	15:33	15:28
480	57.0	67.2	Eichberg		14:33	15:38	15:33	15:28
461	57.7	66.5	Turn right, Oberrietstrasse		14:33	15:38	15:33	15:29
462	58.5	65.7	Turn left, Mettlenstrasse		14:35	15:40	15:35	15:30
420	61.1	63.1	Oberriet		14:38	15:43	15:38	15:33
420	61.3	62.9	Turn right, Staatsstrasse	Road island	14:38	15:44	15:38	15:34
420	62.9	61.3	Roundabout straight, Staatsstrasse		14:41	15:46	15:41	15:36
427	63.5	60.7	Moos	Road island	14:42	15:47	15:42	15:37
428	65.3	58.9	Rüthi	Feed Zone	14:45	15:50	15:45	15:40
449	68.5	55.7	Lienz		14:50	15:56	15:50	15:44
446	70.4	53.8	Sennwald		14:53	15:59	15:53	15:47
453	72.4	51.8	Turn right, Dornen	Road island	14:56	16:02	15:56	15:51
451	74.0	50.2	Frümsen		14:58	16:04	15:58	15:53
463	76.6	47.6	Sax		15:03	16:09	16:03	15:58
486	79.0	45.2	Gams		15:06	16:12	16:06	16:01
478	80.8	43.4	Crossing straight, Grabserstrasse	Road islands 3x	15:09	16:15	16:09	16:04
462	81.7	42.5	Grabs	Road island	15:12	16:18	16:12	16:07
449	83.7	40.5	Buchs	Road islands 3x	15:16	16:23	16:16	16:09
445	84.0	40.2	Roundabout right, St. Gallerstrasse	Road islands 3x	15:16	16:24	16:16	16:10
450	86.5	37.7	Churerstrasse	search.ch Sprint	15:20	16:28	16:20	16:13
468	90.0	34.2	Sevelen	Road islands 4x	15:26	16:34	16:26	16:19
469	94.0	30.2	Weite	Road island	15:32	16:40	16:32	16:25
481	95.8	28.4	Trübbach	Road island	15:35	16:43	16:35	16:27
481	96.1	28.1	Roundabout left, Staatsstrasse	Road island	15:35	16:44	16:35	16:28
473	97.4	26.8	Roundabout left, Gagoz		15:37	16:46	16:37	16:29
479	97.6	26.6	Balzers		15:37	16:46	16:37	16:30
479	98.5	25.7	Turn right, Egerta	Road islands 3x	15:39	16:47	16:39	16:31
473	99.4	24.8	Roundabout left, Neue Churerstrasse	Road islands 3x	15:40	16:49	16:40	16:32
689	103.5	20.7	St. Luzisteig	GPM	15:51	17:00	16:51	16:43
690	103.8	20.4		Road narrowing	15:51	17:00	16:51	16:43
699	103.7	20.5	Roundabout straight, Steigstrasse		15:52	17:01	16:52	16:43
530	106.5	17.7	Maienfeld		15:55	17:04	16:55	16:46

m ü. M.	km	km	Location	Adver- tising convoy	Average speed km/h			
					36	38	40	
503	107.3	16.9	Turn left, Landstrasse	Green Zone	15:56	17:05	16:56	16:47
505	110.5	13.7	Landstrasse	search.ch Sprint	16:00	17:10	17:00	16:51
524	111.9	12.3	Turn left, Hauptstrasse	Traffic divider	16:02	17:12	17:02	16:53
524	112.0	12.2	Roundabout straight, Kantonsstrasse		16:02	17:12	17:02	16:53
526	112.1	12.1	Landquart		16:02	17:12	17:02	16:53
530	112.2	12.0	Roundabout straight, Kantonsstrasse		16:03	17:12	17:03	16:54
528	112.4	11.8	Roundabout straight, Kantonsstrasse		16:03	17:13	17:03	16:54
525	113.5	10.7	Roundabout straight, Kantonsstrasse		16:05	17:15	17:05	16:56
549	114.5	9.7	Igis		16:06	17:16	17:06	16:57
561	115.9	8.3	Zizers		16:08	17:18	17:08	16:58
541	117.6	6.6	Roundabout straight, Deutsche Strasse		16:10	17:20	17:10	17:01
545	119.5	4.7	Trimmis		16:12	17:23	17:12	17:03
591	122.8	1.4	Chur		16:17	17:28	17:17	17:07
591	123.0	1.2	Turn left, Waisenhausstrasse		16:17	17:28	17:17	17:07
661	124.2	0.0	Finish - Chur		16:20	17:31	17:20	17:10

**GAIS**  
Length: 6.7 km    Ø Gradient in %: 7.1



**ST. LUZISTEIG**  
Length: 2.8 km    Ø Gradient in %: 7.7



### GPS DATA



PPO START

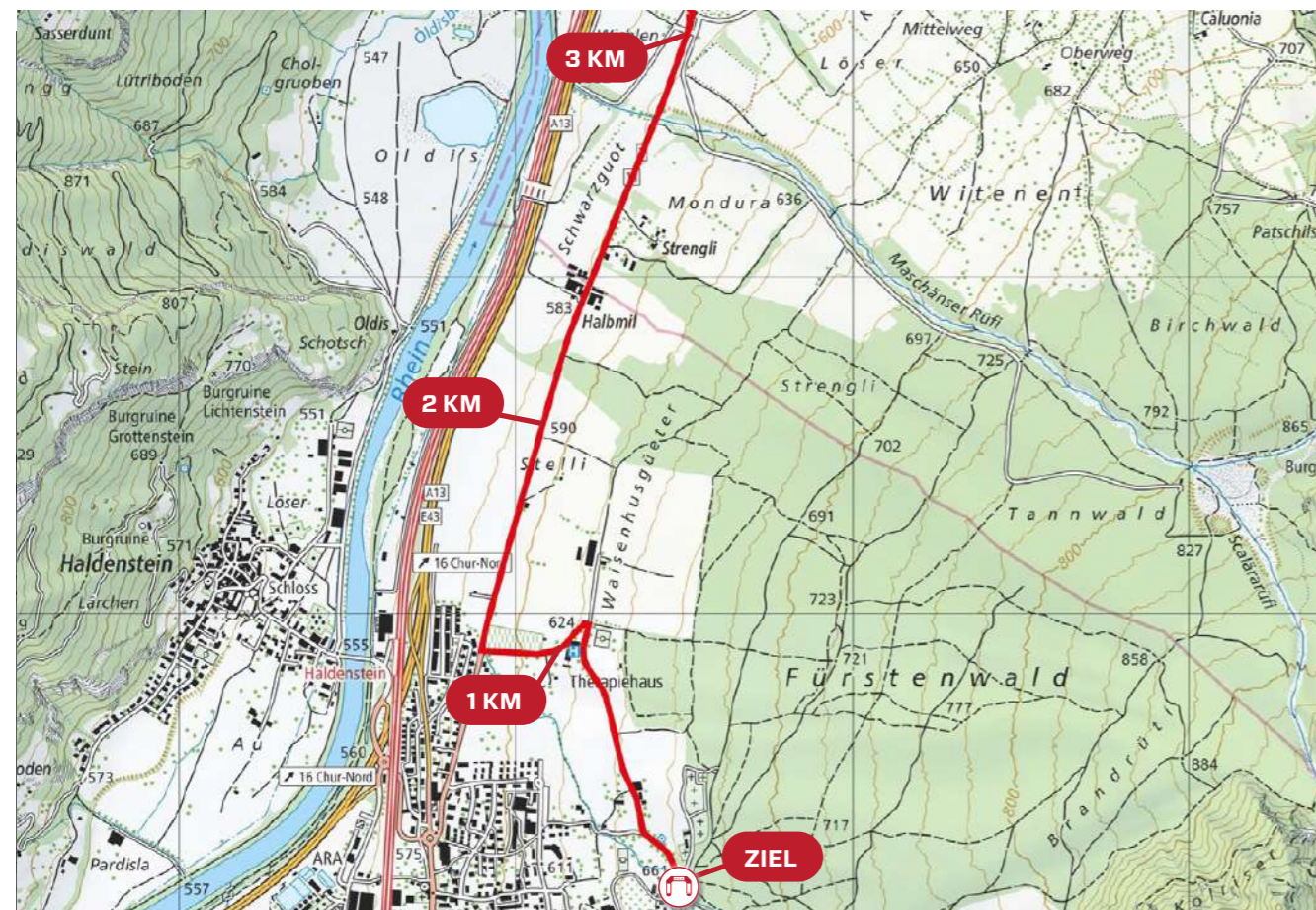
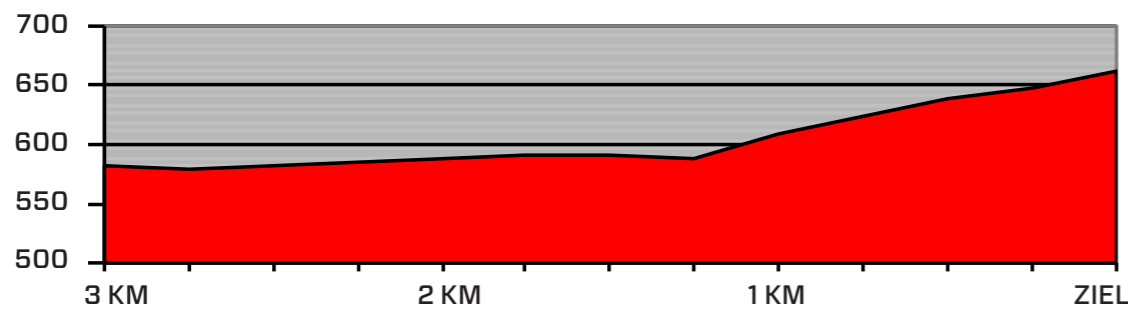


PPO FINISH

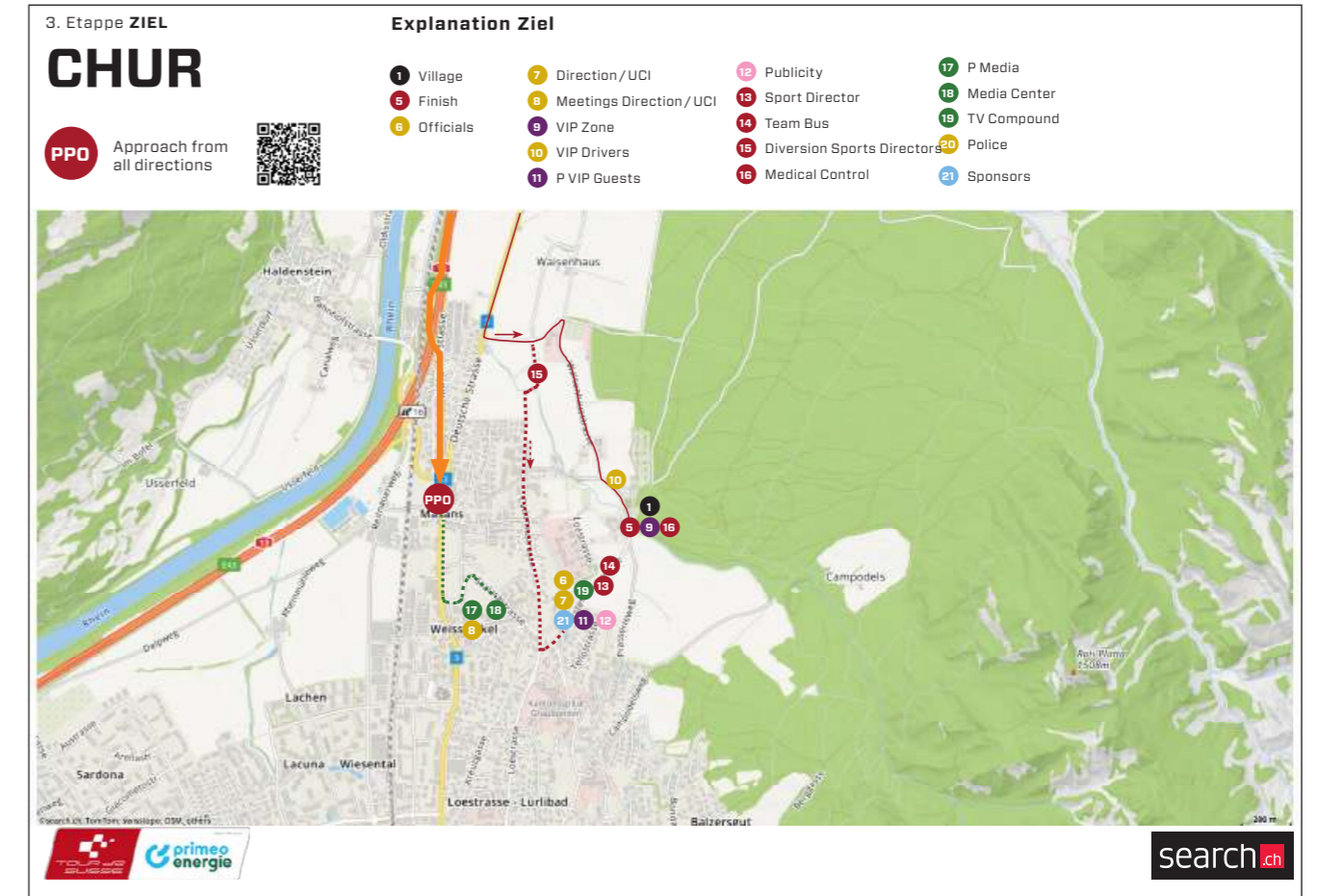


FEEDZONE

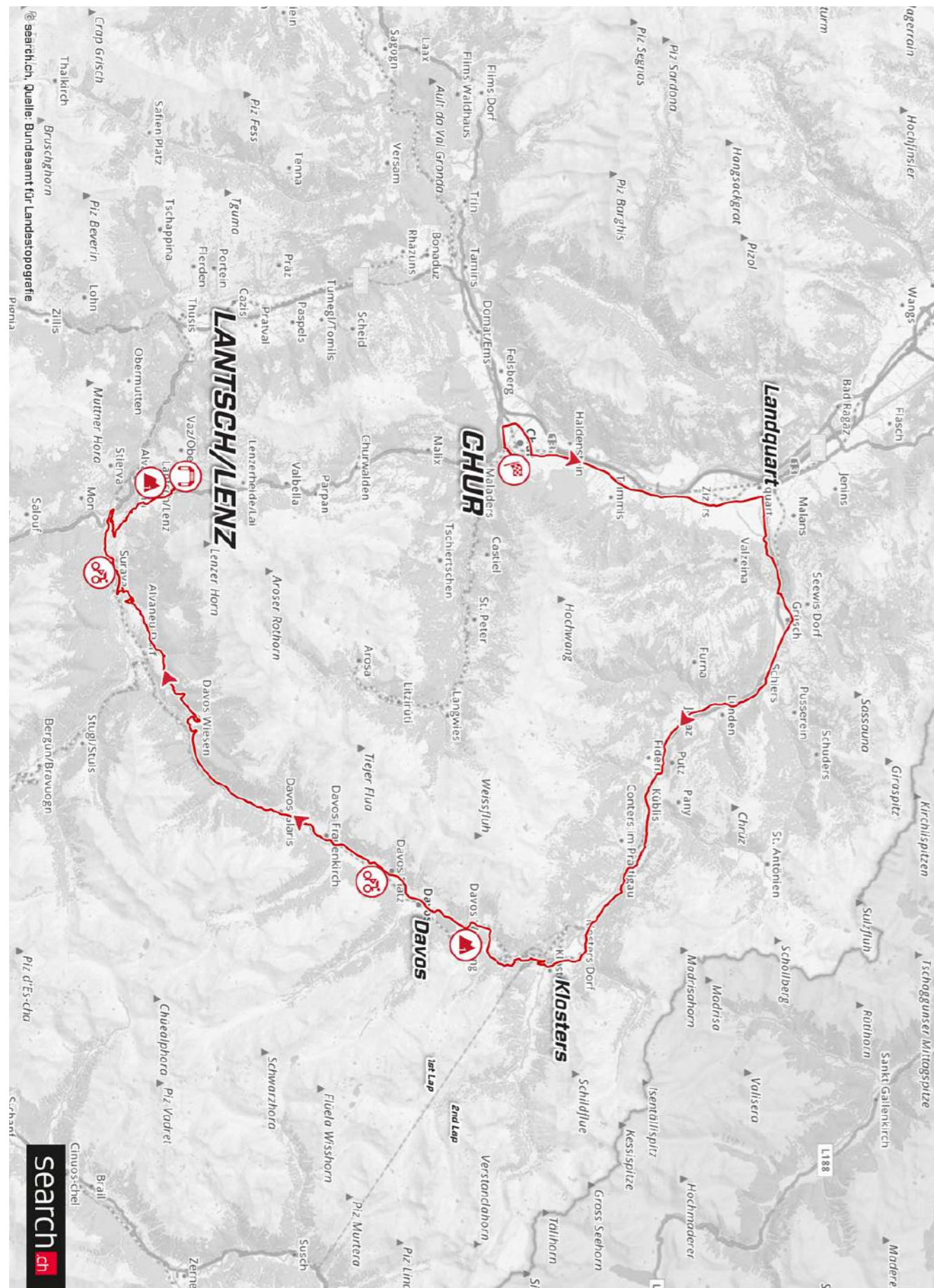
### LAST 3 KILOMETERS



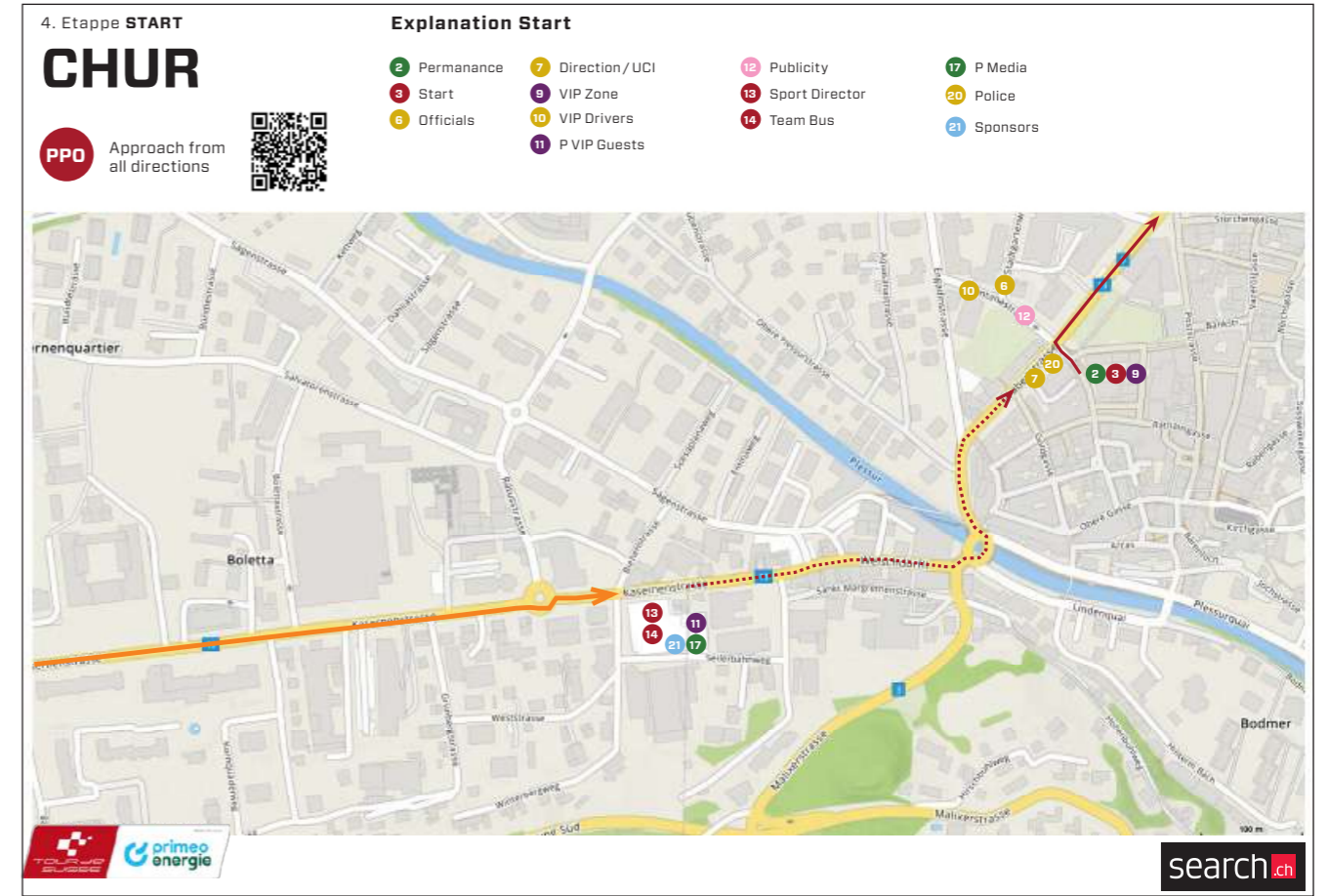
### ROUTE & TRAFFIC PLAN CHUR



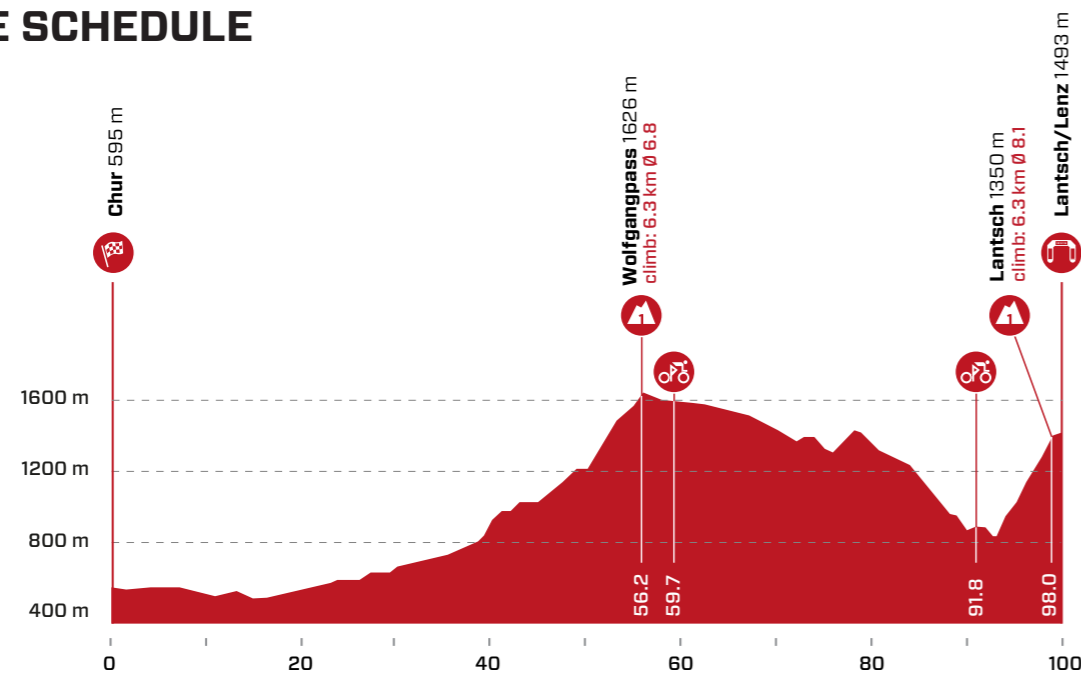
# 4<sup>TH</sup> STAGE CHUR – LANTSCH/LENZ



# ROUTE & TRAFFIC PLAN CHUR



# RACE SCHEDULE



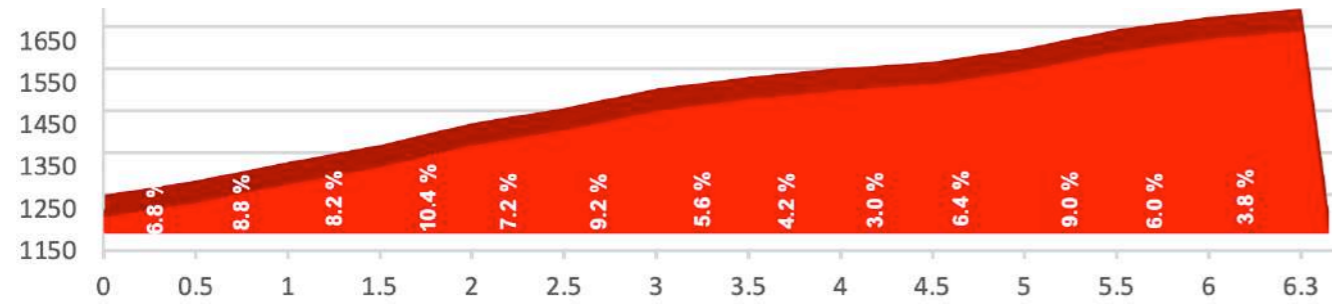
Ascent **▲ 2293 m** Total time **2 h 57 min**  
 Descent **▼ 1491 m** Average Speed **34 km/h**

m ü. M.	km	km	Location	Advertising convoy	Average speed km/h			
					32	34	36	
Neutralisation 1 Km Nikolaigasse - Grabenstrasse - Welschdörfli - Kasernenstr.					13:20	14:20	14:20	14:20
595	0.0	98.5	Chur		13:23	14:23	14:23	12:51
583	2.5	96.0	Roundabout right, Deutsche Strasse		13:31	14:31	14:31	14:30
556	5.0	93.5	Trimmis		13:34	14:35	14:34	14:34
541	7.5	91.0	Roundabout straight, Kantonsstrasse		13:38	14:39	14:38	14:37
557	9.8	88.7	Zizers		13:41	14:42	14:41	14:40
533	11.0	87.5	Igis		13:43	14:44	14:43	14:42
525	11.5	87.0	Roundabout straight, Kantonsstrasse		13:44	14:45	14:44	14:42
531	12.0	86.5	Landquart		13:44	14:46	14:44	14:43
528	12.7	85.8	Roundabout straight, Kantonsstrasse		13:45	14:47	14:45	14:44
530	13.0	85.5	Roundabout right, Prättigauerstrass	Road island	13:46	14:47	14:46	14:45
539	14.0	84.5	Roundabout right, Waldau		13:47	14:49	14:47	14:46
557	15.2	83.3	Turn left, Waldau		13:49	14:51	14:49	14:48
591	18.4	80.1	Turn left, Hauptstrasse		13:55	14:57	14:55	14:53
605	19.0	79.5	Seewis Paradisla		13:56	14:58	14:56	14:54
632	19.6	78.9	Seewis Schmitten		13:57	15:00	14:57	14:55
630	19.9	78.6	Grüsch		13:58	15:00	14:58	14:56
635	20.0	78.5	Crossing straight, Landstrasse		13:58	15:00	14:58	14:56
630	20.2	78.3	Turn left, Landstrasse		13:58	15:01	14:58	14:56
612	21.0	77.5	Turn left, Böschis	Road island	13:59	15:01	14:59	14:57
640	23.1	75.4	Turn left, Dorfstrasse	Road island	14:03	15:05	15:03	15:01
659	23.2	75.3	Schiers		14:03	15:06	15:03	15:01
662	23.6	74.9	Crossing straight, Dorfstrasse		14:04	15:06	15:04	15:01

m ü. M.	km	km	Location	Advertising convoy	Average speed km/h			
					32	34	36	
678	25.4	73.1	Turn right, Hauptstrasse		14:06	15:09	15:06	15:04
708	27.4	71.1	Pragg-Jenaz		14:10	15:13	15:10	15:07
733	30.0	68.5	Turn right, Hauptstrasse		14:14	15:17	15:14	15:11
721	30.1	68.4	Jenaz		14:14	15:18	15:14	15:11
790	33.6	64.9	Turn right, Kantonsstrasse	Road island	14:21	15:25	15:21	15:18
799	33.8	64.7	Roundabout straight, Kantonsstrasse		14:22	15:25	15:22	15:18
799	34.0	64.5	Dalvazza		14:22	15:26	15:22	15:19
820	34.6	63.9	Küblis		14:23	15:27	15:23	15:20
979	36.6	61.9	Turn right, Hauptstrasse		14:29	15:33	15:29	15:25
987	36.8	61.7	Saas im Prättigau	Green Zone	14:30	15:34	15:30	15:26
1029	39.9	58.6	Roundabout left, Prättigauerstrasse	Road island	14:35	15:39	15:35	15:31
1029	40.0	58.5	Pagrüeg		14:35	15:39	15:35	15:31
1037	40.9	57.6	Roundabout straight, Prättigauerstrasse		14:36	15:41	15:36	15:32
1056	41.9	56.6	Turn right, Kantonsstrasse		14:38	15:43	15:38	15:34
1125	42.9	55.6	Klosters		14:41	15:46	15:41	15:37
1287	47.5	51.0	Turn right, Davoserstrasse		14:52	15:57	15:52	15:47
1290	47.8	50.7	Turn right, Prättigauerstrasse		14:52	15:58	15:52	15:47
1626	54.7	43.8	Davos Wolfgang	GPM	15:08	16:14	16:08	16:02
1580	55.5	43.0	Prättigauerstrasse	Tunnel 400m	15:09	16:15	16:09	16:03
1570	57.5	41.0	Davos	Road islands 4x	15:12	16:18	16:12	16:06
1570	58.2	40.3	Bahnhofstrasse	search.ch Sprint	15:13	16:20	16:13	16:07
1500	65.7	32.8	Davos Frauenkirch		15:25	16:32	16:25	16:18
1444	67.7	30.8	Davos Glaris		15:27	16:35	16:27	16:20
1409	69.0	29.5	Landwasserstrasse	Tunnel 300m	15:29	16:37	16:29	16:22
1382	70.2	28.3	Landwasserstrasse	Tunnel 300m	15:31	16:39	16:31	16:24
1382	71.6	26.9	Landwasserstrasse	Tunnel 2.8 Km	15:33	16:41	16:33	16:26
1422	76.4	22.1	Davos Wiesen	Green Zone	15:41	16:49	16:41	16:33
1276	81.7	16.8	Schmitten		15:48	16:57	16:48	16:40
1179	84.8	13.7	Alvaneu Dorf	Road island	15:52	17:01	16:52	16:44
968	87.1	11.4	Turn right, 417	Road islands 2x	15:54	17:04	16:54	16:46
940	87.9	10.6	417	Railroad crossing	15:55	17:05	16:55	16:47
910	88.4	10.1	Surava		15:56	17:05	16:56	16:47
855	90.3	8.2	417	search.ch Sprint	15:58	17:08	16:58	16:49
852	91.3	7.2	Roundabout right, Stradung	Road islands 2x	15:59	17:09	16:59	16:51
850	91.6	6.9	Tiefencastel		16:00	17:09	17:00	16:51
891	92.0	6.5	Turn right, Veia da Lantsch	Road island	16:01	17:11	17:01	16:52
1138	94.8	3.7	Vazerol		16:09	17:20	17:09	17:00
1304	96.9	1.6	Lantsch	Road island	16:16	17:26	17:16	17:06
1350	97.3	1.2	Voia Principala	GPM	16:16	17:26	17:16	17:06
1388	98.0	0.5	Turn left, Biathlonareana		16:19	17:30	17:19	17:09
1380	98.3	0.2	Turn left		16:19	17:30	17:19	17:09
1378	98.4	0.1	Turn right		16:19	17:30	17:19	17:10
1370	98.5	0.0	Finish - Roland Arena - Lantsch/Lenz		16:20	17:31	17:20	17:10

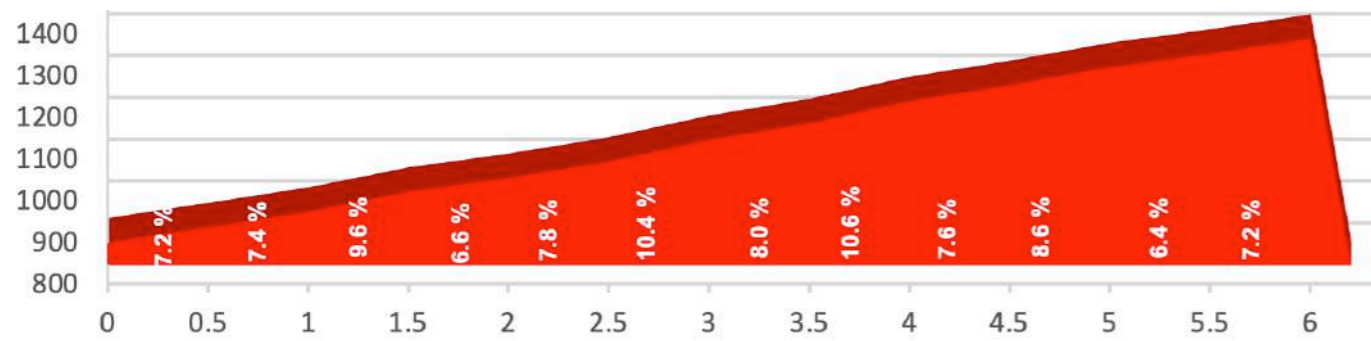
## WOLFGANGPASS

Length: 6.3 km    Ø Gradient in %: 6.8



## LANTSCH

Length: 6.3 km    Ø Gradient in %: 8.1



## GPS DATA

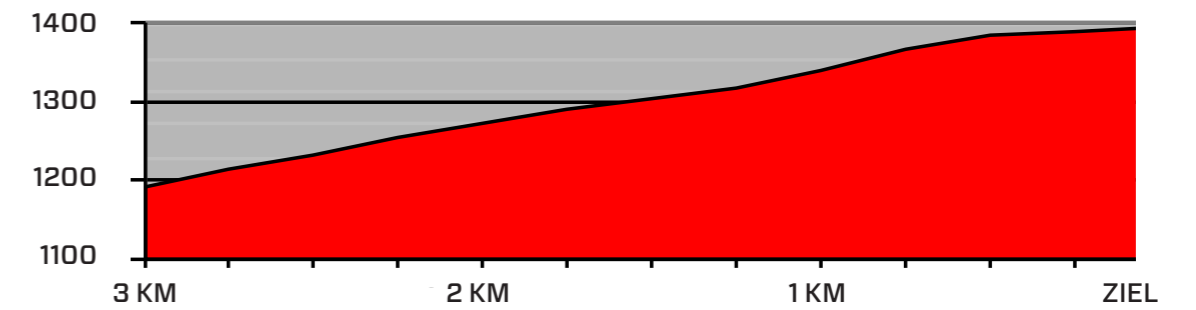


PPO START



PPO FINISH

## LAST 3 KILOMETERS





# ROUTE & TRAFFIC PLAN LANTSCH/LENZ



4. Etappe ZIEL

## ROLAND ARENA

Approach from all directions

**Explanation Ziel**

1 Village	9 VIP Zone	13 Team Soigneur Finish	17 P Media
5 Finish	10 VIP Drivers	14 Sport Director	18 Media Center
6 Officials	11 P VIP Guests	15 Team Bus	19 TV Compound
7 Direction/UCI	12 Publicity	16 Diversion Sports Directors	20 Police
8 Meetings Direction/UCI		17 Medical Control	21 Sponsors

Team Buse 14 Parking in Lenzerheide - Parkplatz Fadail

search.ch

### Key - Race schedule

	Start		
	GPM Kat. HC		Finish
	GPM Kat. 1		search.ch Sprint
	GPM Kat. 2		Feeding zone
	GPM Kat. 3		Intermediate time
			bumps
			Tunnel
			Railroad crossing
			Narrowing road



primeo energie

primeo energie

primeo energie

primeo energie

50

Europcar

